

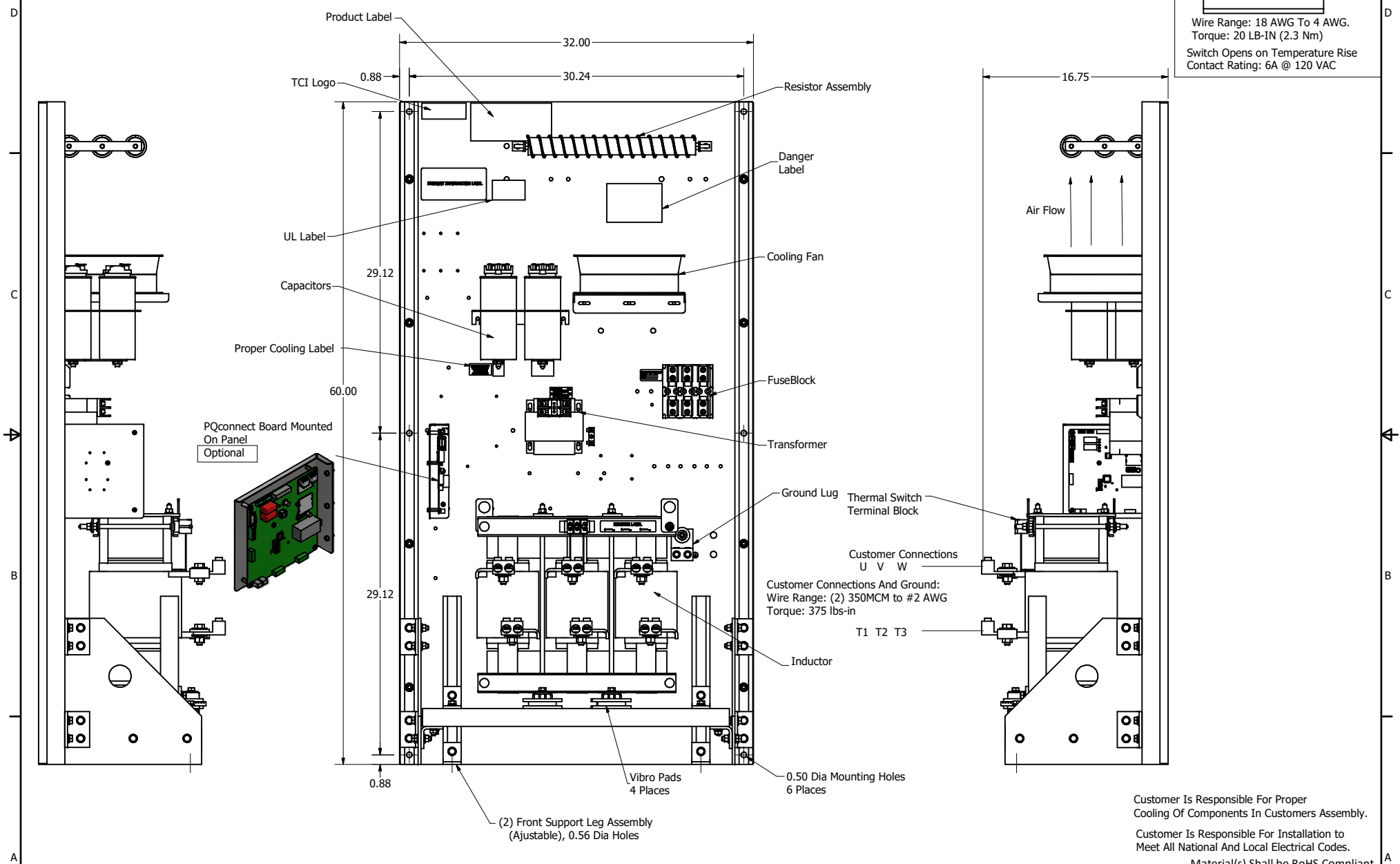
SineWave Part Number	Schematic Drawing#	Approx Weight (LBS)
KMG362C00A	24281-23A	580
KMG362C00P	24281-23P	585

HorsePower (HP)	kVar	Max Amps	Voltage (V)	HZ	Phase
350	30	362	600	60	3

1

Thermal Switch Terminal Block

Wire Range: 18 AWG To 4 AWG.  
Torque: 20 LB-IN (2.3 Nm)  
Switch Opens on Temperature Rise  
Contact Rating: 6A @ 120 VAC



Customer Is Responsible For Proper Cooling Of Components In Customers Assembly.

Customer Is Responsible For Installation to Meet All National And Local Electrical Codes.

Material(s) Shall be RoHS Compliant

TCI, LLC CLAIMS PROPRIETARY RIGHTS IN THE MATERIAL HEREIN DISCLOSED. IT IS SUPPLIED WITHOUT PREJUDICE TO ANY PATENT RIGHTS OF TCI AND MAY NOT BE REPRODUCED OR USED TO MANUFACTURE ANYTHING SHOWN THEREIN WITHOUT WRITTEN PERMISSION FROM TCI.					TOLERANCES (EXCEPT AS NOTED) DECIMAL .XX ± .25 .XXX ± .10 FRACTIONAL ± 1/16 ANGULAR ± 1°	<b>TCI</b> W132 N10611 Grant Drive Germantown, WI 53022 KMG362C00-, SineWave Filter Open Panel, 350HP, 600V DWN BY: DSW DATE: 10/12/2016 104430DG SCALE: 1/5 DRAWN: FILE: SHEET 1 OF 1
	B	Add PQconnect Board	9/24/2020	DSW		
	NO	REVISION	DATE	BY		