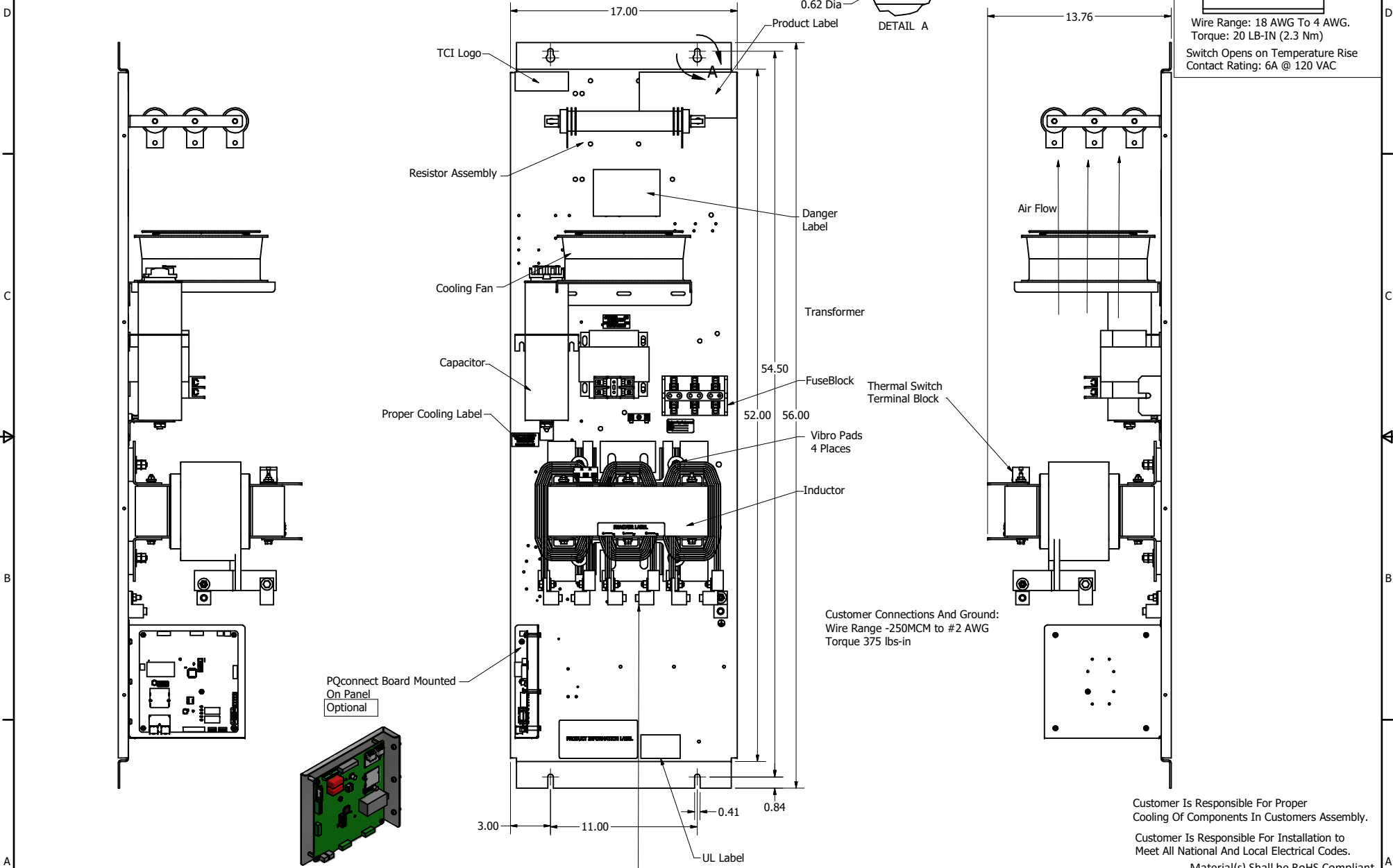
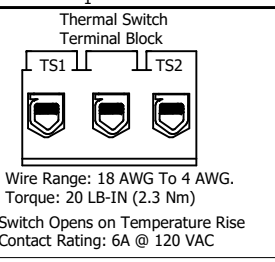
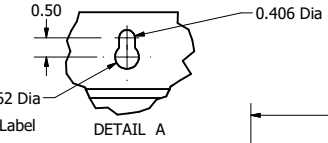


| SineWave Part Number | Schematic Drawing# | Approx Weight (LBS) |
|----------------------|--------------------|---------------------|
| KMG160C00A | 24281-23A | 260 |
| KMG160C00P | 24281-23P | 265 |

| HorsePower (HP) | kVar | Max Amps | Voltage (V) | HZ | Phase |
|-----------------|------|----------|-------------|----|-------|
| 150 | 15 | 160 | 600 | 60 | 3 |



Customer Connections And Ground:
Wire Range -250MCM to #2 AWG
Torque 375 lbs-in

Customer Is Responsible For Proper Cooling Of Components In Customers Assembly.

Customer Is Responsible For Installation to Meet All National And Local Electrical Codes.

Material(s) Shall be RoHS Compliant

Customer Connections
U V W
T1 T2 T3

| | | | | | |
|--|-----------------------|-----------|-----|------------------------------|--|
| TCI, LLC CLAIMS PROPRIETARY RIGHTS IN THE MATERIAL HEREIN DISCLOSED. IT IS SUPPLIED WITHOUT PREJUDICE TO ANY PATENT RIGHTS OF TCI AND MAY NOT BE REPRODUCED OR USED TO MANUFACTURE ANYTHING SHOWN THEREIN WITHOUT WRITTEN PERMISSION FROM TCI. | | | | TOLERANCES (EXCEPT AS NOTED) | TCI W132 N10611 Grant Drive Germantown, WI 53022 KMG160C00-, SineWave Filter Open Panel, 150HP, 600V |
| | | | | DECIMAL | |
| | | | | .XX ± .25 .XXX ± .10 | |
| | | | | FRACTIONAL | |
| | B Add PQconnect Board | 9/24/2020 | DSW | ± 1/16 | DRN BY: DSW DATE: 10/12/2016 SCALE: 1/5 DRAWN: FILE: 104426DG NO. REVISION DATE BY ± 1° |
| | | | | | SHEET 1 OF 1 |