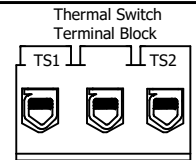
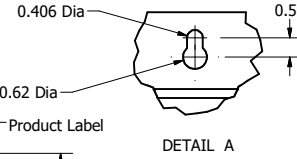
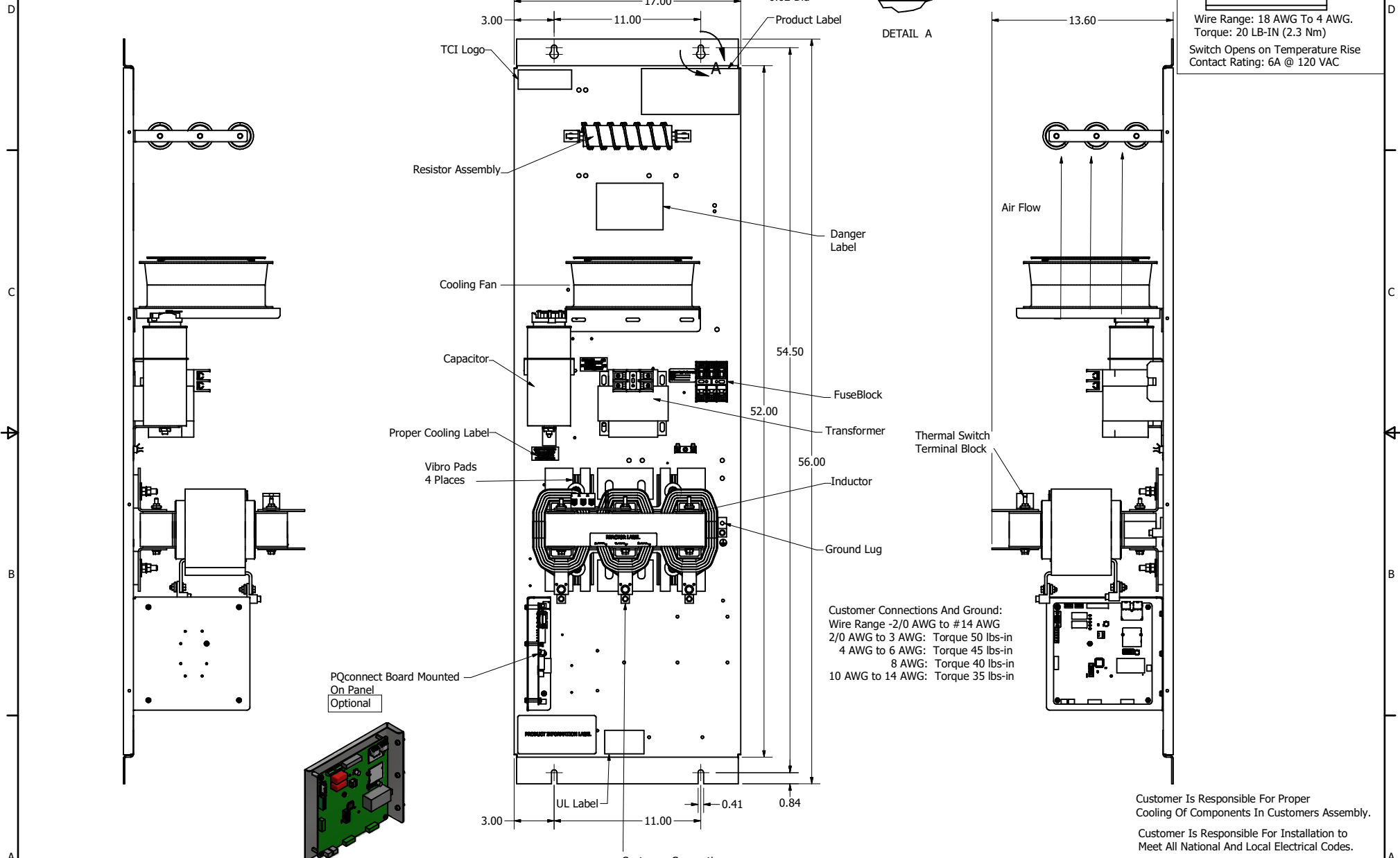


SineWave Part Number	Schematic Drawing#	Approx Weight (LBS)
KMG80C00A	24281-23A	195
KMG80C00P	24281-23P	200

HorsePower (HP)	kVar	Max Amps	Voltage (V)	HZ	Phase
75	10	80	600	60	3



Wire Range: 18 AWG To 4 AWG.
Torque: 20 LB-IN (2.3 Nm)
Switch Opens on Temperature Rise
Contact Rating: 6A @ 120 VAC



Customer Connections And Ground:
Wire Range -2/0 AWG to #14 AWG
2/0 AWG to 3 AWG: Torque 50 lbs-in
4 AWG to 6 AWG: Torque 45 lbs-in
8 AWG: Torque 40 lbs-in
10 AWG to 14 AWG: Torque 35 lbs-in

Customer Connections
U V W
T1 T2 T3

TCI, LLC CLAIMS PROPRIETARY RIGHTS IN THE MATERIAL HEREIN DISCLOSED. IT IS SUPPLIED WITHOUT PREJUDICE TO ANY PATENT RIGHTS OF TCI AND MAY NOT BE REPRODUCED OR USED TO MANUFACTURE ANYTHING SHOWN THEREIN WITHOUT WRITTEN PERMISSION FROM TCI.					TOLERANCES (EXCEPT AS NOTED)	TCI W132 N10611 Grant Drive Germantown, WI 53022 KMG80C00-, SineWave Filter Open Panel, 75HP, 600V
					DECIMAL	
					.XX ± .25 .XXX ± .10	
					FRACTIONAL	
B	Add PQconnect Board	9/23/2020	DSW		± 1/16	DRN BY: DSW DATE: 10/12/2016 SCALE: 1/5 FILE: 104423DG
NO	REVISION	DATE	BY		± 1°	DATE: 10/12/2016 FILE: 104423DG SHEET 1 OF 1