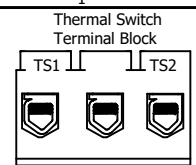
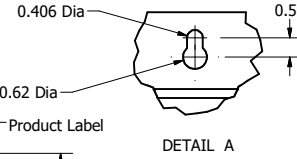
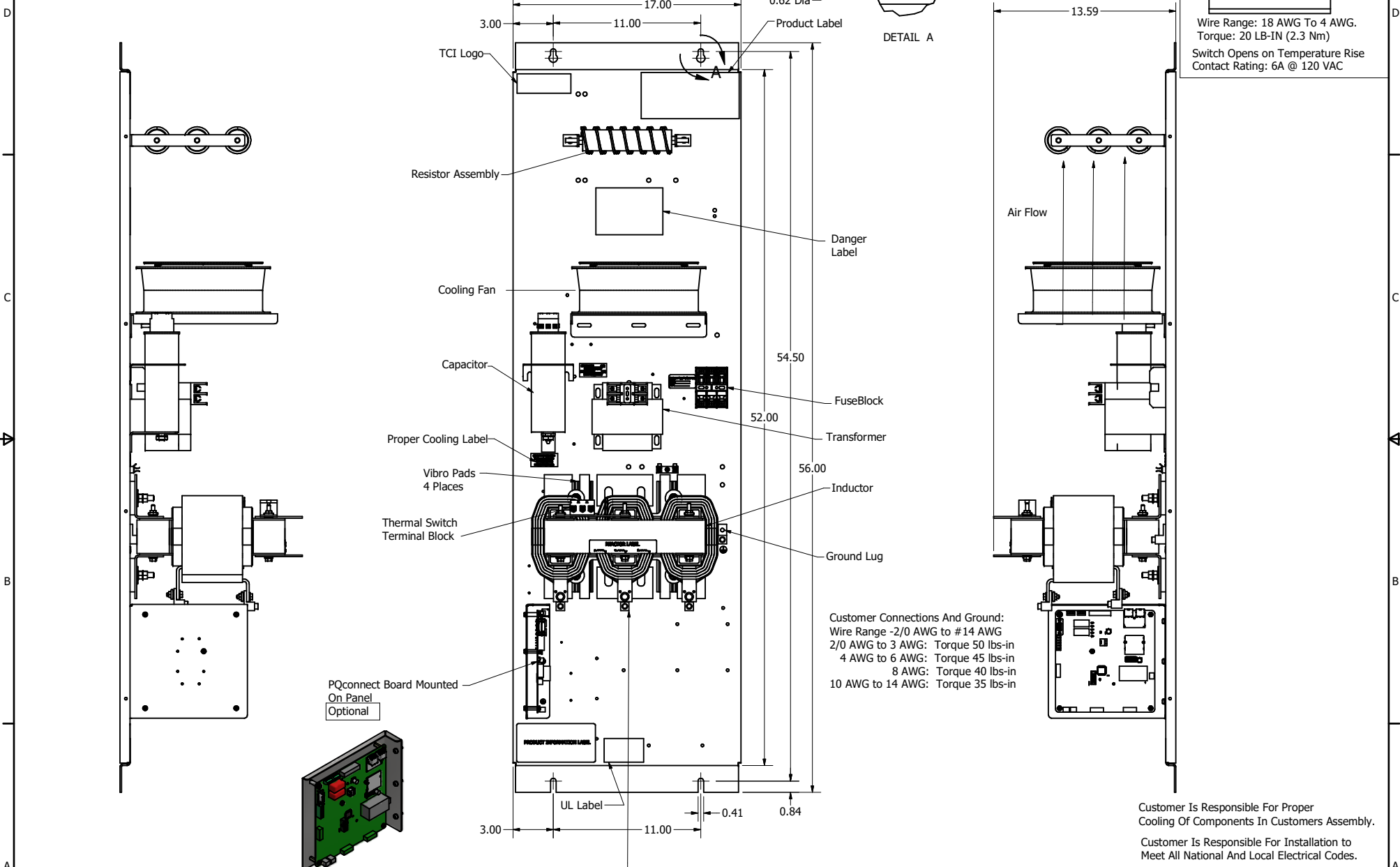


SineWave Part Number	Schematic Drawing#	Approx Weight (LBS)
KMG65C00A	24281-23A	175
KMG65C00P	24281-23P	180

HorsePower (HP)	kVar	Max Amps	Voltage (V)	HZ	Phase
60	5	65	600	60	3



Wire Range: 18 AWG to 4 AWG.
Torque: 20 LB-IN (2.3 Nm)
Switch Opens on Temperature Rise
Contact Rating: 6A @ 120 VAC



Customer Connections And Ground:
Wire Range -2/0 AWG to #14 AWG
2/0 AWG to 3 AWG: Torque 50 lbs-in
4 AWG to 6 AWG: Torque 45 lbs-in
8 AWG: Torque 40 lbs-in
10 AWG to 14 AWG: Torque 35 lbs-in

Customer Is Responsible For Proper Cooling Of Components In Customers Assembly.
Customer Is Responsible For Installation to Meet All National And Local Electrical Codes.
Material(s) Shall be RoHS Compliant

Customer Connections
U V W
T1 T2 T3

TCI, LLC CLAIMS PROPRIETARY RIGHTS IN THE MATERIAL HEREIN DISCLOSED. IT IS SUPPLIED WITHOUT PREJUDICE TO ANY PATENT RIGHTS OF TCI AND MAY NOT BE REPRODUCED OR USED TO MANUFACTURE ANYTHING SHOWN THEREIN WITHOUT WRITTEN PERMISSION FROM TCI.

NO	REVISION	DATE	BY	ANGULAR
B	Add PQconnect Board	9/23/2020	DSW	± 1/16
NO				± 1°

TOLERANCES (EXCEPT AS NOTED)		DATE		FILE	
DECIMAL	FRACTIONAL	DRN BY	DATE	REVISED	FILE
.XX ± .25 .XXX ± .10	± 1/16	DSW	10/12/2016		104422DG
		SCALE: 1/5			SHT 1 OF 1

W132 N10611 Grant Drive
Germantown, WI 53022

KMG65C00-, SineWave Filter
Open Panel, 60HP, 600V