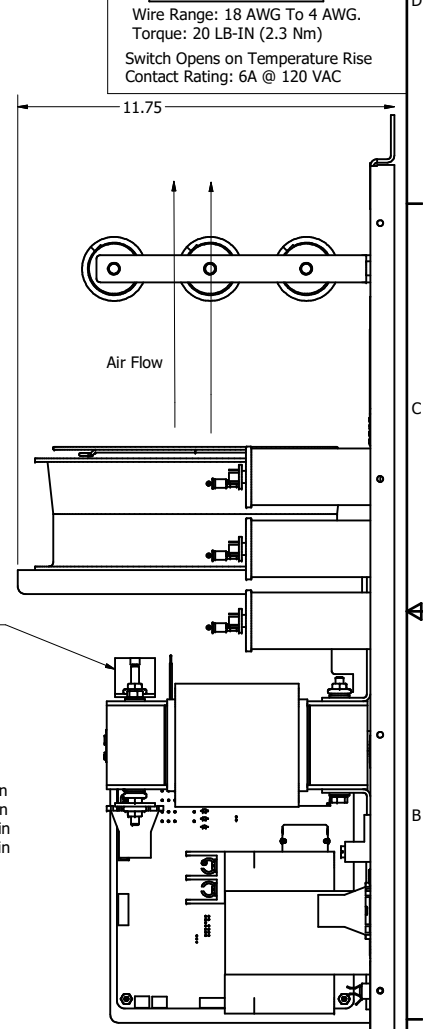
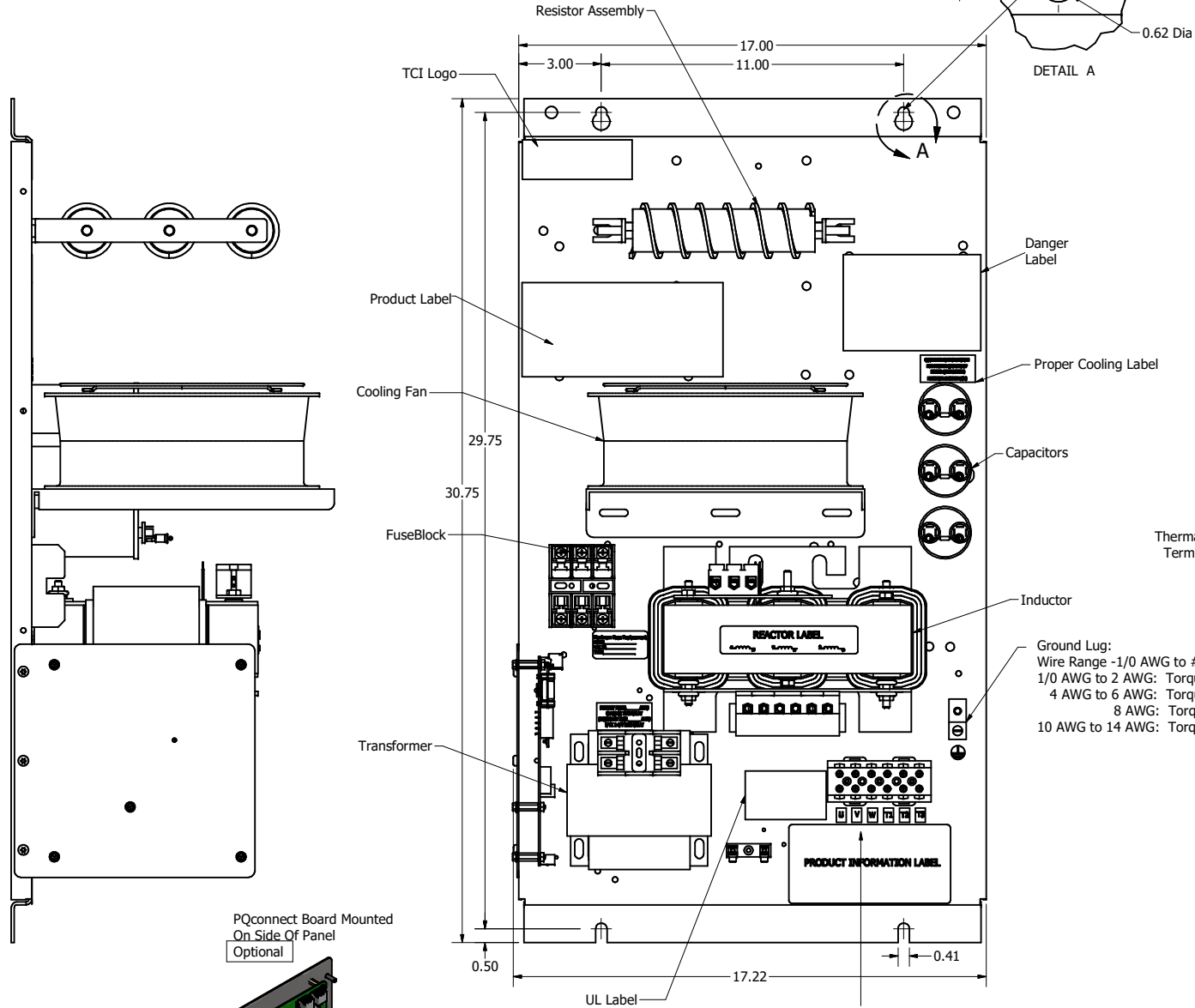


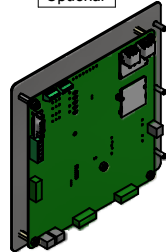
| SineWave Part Number | Schematic Drawing# | Approx Weight (LBS) |
|----------------------|--------------------|---------------------|
| KMG35C00A | 24281-11A | 99 |
| KMG35C00P | 24281-11P | 100 |

| HorsePower (HP) | kVar | Max Amps | Voltage (V) | HZ | Phase |
|-----------------|------|----------|-------------|----|-------|
| 30 | 2.71 | 35 | 600 | 60 | 3 |

D
C
B
A



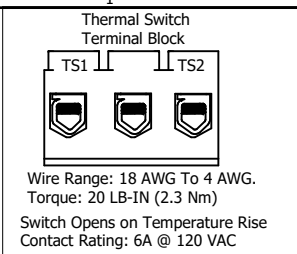
PQconnect Board Mounted
On Side Of Panel
Optional



Power Block Connections
Wire Range -1 AWG to #22 AWG
1 AWG to 4 AWG: Torque 35 lbs-in
6 AWG to 14 AWG: Torque 30 lbs-in
16 AWG to 20 AWG: Torque 25 lbs-in
22 AWG: Torque 20 lbs-in

U V W T1 T2 T3

Ground Lug:
Wire Range -1/0 AWG to #14 AWG
1/0 AWG to 2 AWG: Torque 50 lbs-in
4 AWG to 6 AWG: Torque 45 lbs-in
8 AWG: Torque 40 lbs-in
10 AWG to 14 AWG: Torque 35 lbs-in



Customer Is Responsible For Proper Cooling Of Components In Customers Assembly.
Customer Is Responsible For Installation to Meet All National And Local Electrical Codes.

Material(s) Shall be RoHS Compliant

| | | | | | | | |
|--|--|---------------|--|------------------------------|--|--|--|
| TCI, LLC CLAIMS PROPRIETARY RIGHTS IN THE MATERIAL HEREIN DISCLOSED. IT IS SUPPLIED WITHOUT PREJUDICE TO ANY PATENT RIGHTS OF TCI AND MAY NOT BE REPRODUCED OR USED TO MANUFACTURE ANYTHING SHOWN THEREIN WITHOUT WRITTEN PERMISSION FROM TCI. | | | | TOLERANCES (EXCEPT AS NOTED) | | W132 N10611 Grant Drive Germantown, WI 53022 KMG35C00- SineWave Filter Open Panel, 30HP, 600V | |
| | | | | DECIMAL | | OWN BY: DSW DATE: 10/12/2016 FILE: 104419G SCALE: 1/8 DRAWN: TCE SHEET: 1 OF 1 | |
| | | | | FRACTIONAL | | | |
| | | | | ANGULAR | | | |
| | | | | ± 1° | | | |
| B Add PQconnect Board | | 9/23/2020 DSW | | | | | |
| NO REVISION | | DATE BY | | | | | |