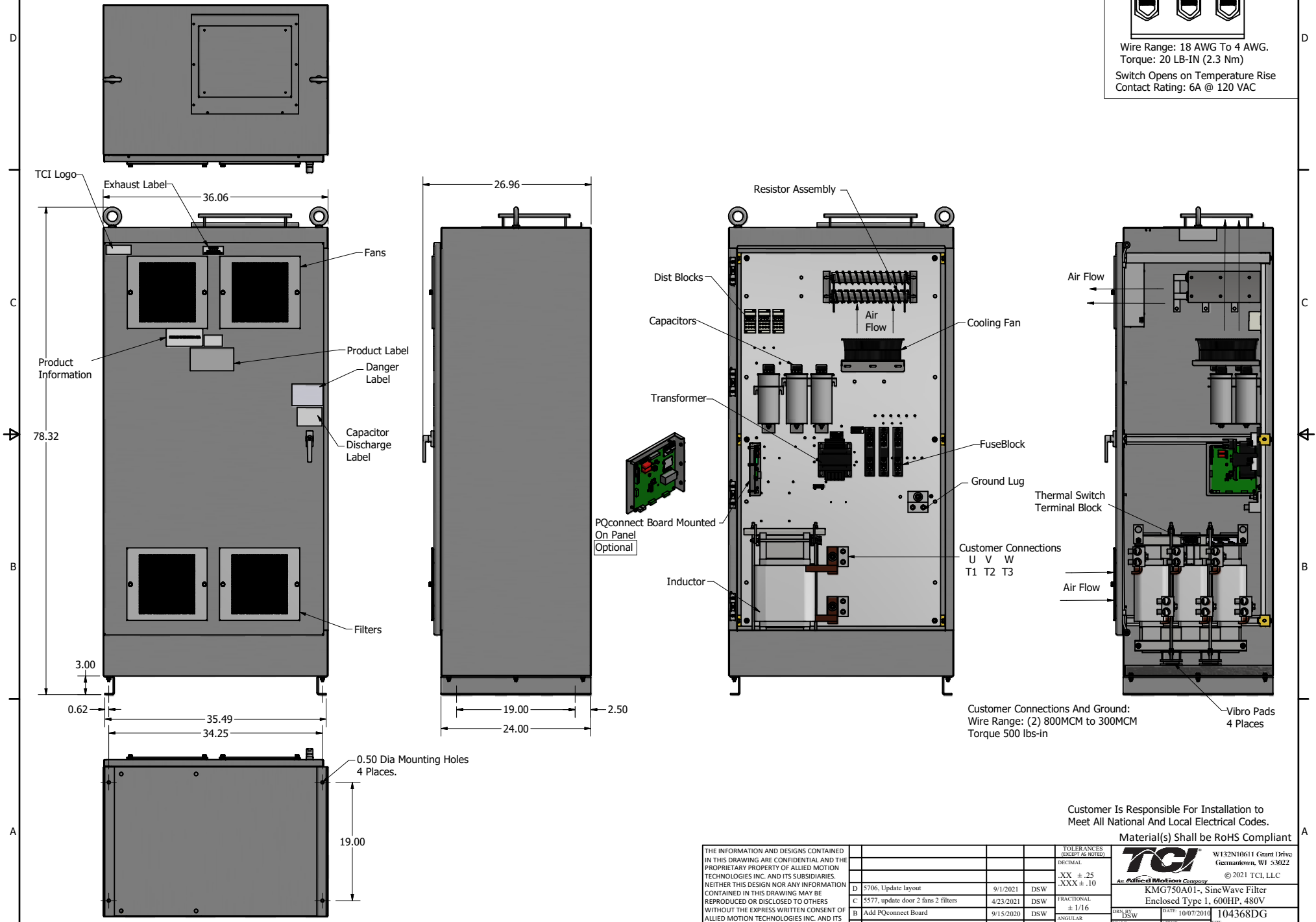
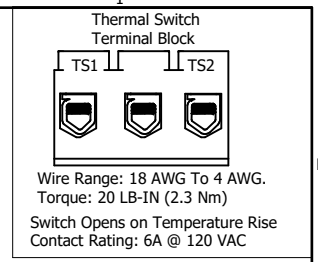


SineWave Part Number	Schematic Drawing#	Approx Weight (LBS)
KMG750A01A	24281-3A	1084
KMG750A01P	24281-3P	1089

HorsePower (HP)	kVar	Max Amps	Voltage (V)	HZ	Phase
600	60	750	480	60	3



Customer Connections And Ground:
Wire Range: (2) 800MCM to 300MCM
Torque 500 lbs-in

Customer Is Responsible For Installation to Meet All National And Local Electrical Codes.

Material(s) Shall be RoHS Compliant

THE INFORMATION AND DESIGNS CONTAINED IN THIS DRAWING ARE CONFIDENTIAL AND THE PROPRIETARY PROPERTY OF ALLIED MOTION TECHNOLOGIES INC. AND ITS SUBSIDIARIES. NEITHER THIS DESIGN NOR ANY INFORMATION CONTAINED IN THIS DRAWING MAY BE REPRODUCED OR DISCLOSED TO OTHERS WITHOUT THE EXPRESS WRITTEN CONSENT OF ALLIED MOTION TECHNOLOGIES INC. AND ITS SUBSIDIARIES.	NO	REVISION	DATE	BY	TOLERANCES (EXCEPT AS NOTED)	
					DECIMAL	
						.XX ± .25 .XXX ± .10
						FRACTIONAL
					ANGULAR	
					± 1°	

D 5706, Update layout C 5577, update door 2 fans 2 filters B Add PQconnect Board	9/1/2021 4/23/2021 9/15/2020	DSW DSW DSW
--	------------------------------------	-------------------

W132N10611 Grand Drive Germantown, WI 53022 © 2021 TCI, LLC An Official Motion Company KMG750A01 - SineWave Filter Enclosed Type 1, 600HP, 480V 104368DG	DWN BY: DSW DATE: 10/07/2018 SCALE: 1/5.5 DRWNO:	TCI
--	---	-----