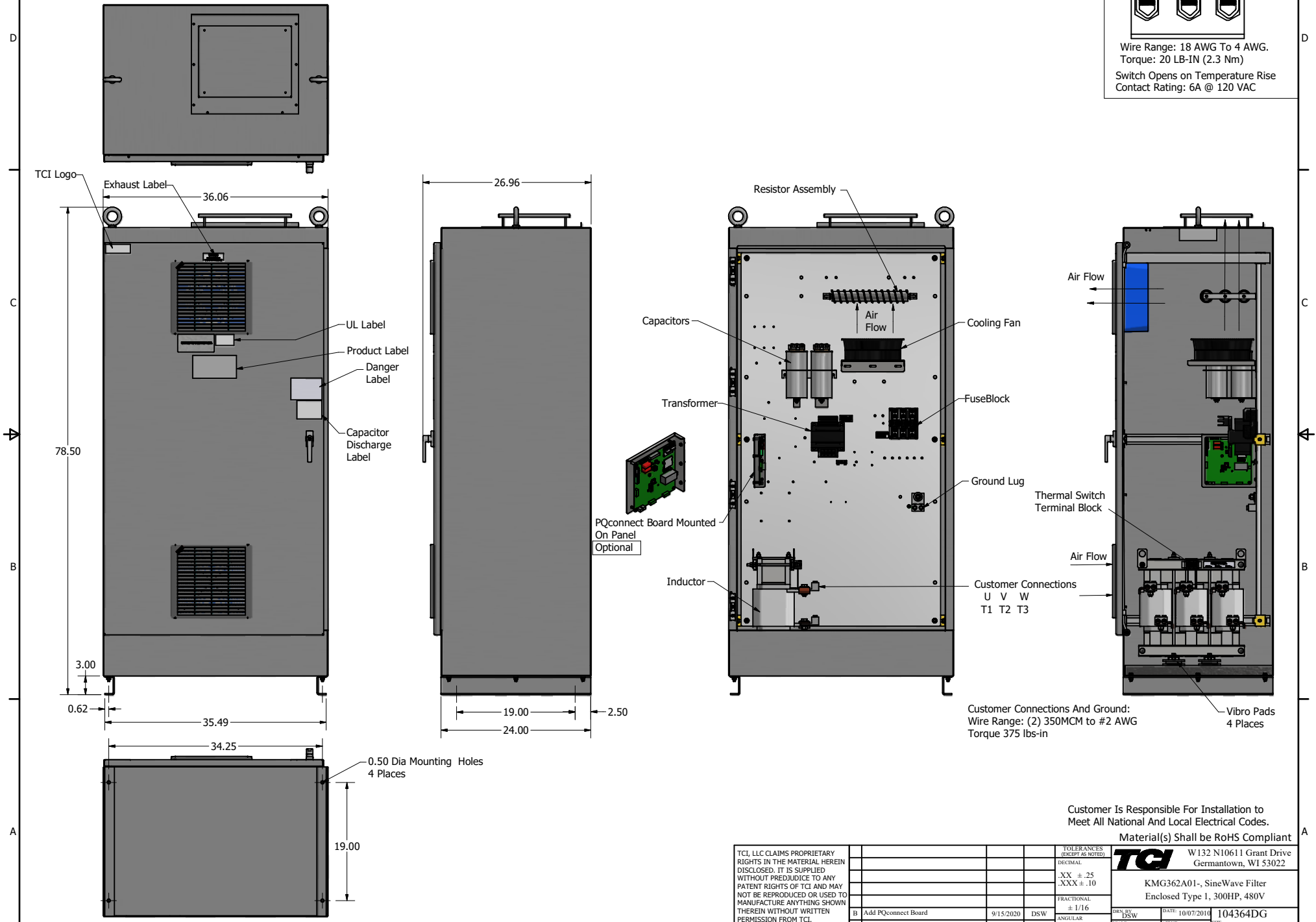
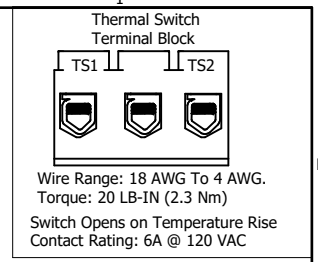


SineWave Part Number	Schematic Drawing#	Approx Weight (LBS)
KMG362A01A	24281-3A	799
KMG362A01P	24281-3P	804

HorsePower (HP)	kVar	Max Amps	Voltage (V)	HZ	Phase
300	30	362	480	60	3



Customer Connections And Ground:  
Wire Range: (2) 350MCM to #2 AWG  
Torque 375 lbs-in

Customer Is Responsible For Installation to  
Meet All National And Local Electrical Codes.  
Material(s) Shall be RoHS Compliant

TCI, LLC CLAIMS PROPRIETARY RIGHTS IN THE MATERIAL HEREIN DISCLOSED. IT IS SUPPLIED WITHOUT PREJUDICE TO ANY PATENT RIGHTS OF TCI AND MAY NOT BE REPRODUCED OR USED TO MANUFACTURE ANYTHING SHOWN THEREIN WITHOUT WRITTEN PERMISSION FROM TCI.				TOLERANCES (EXCEPT AS NOTED)	W132 N10611 Grant Drive Germantown, WI 53022 <b>KMG362A01- SineWave Filter</b> Enclosed Type 1, 300HP, 480V 104364DG
				DECIMAL	
				.XX ±.25 .XXX ±.10	
				FRACTIONAL	
B Add PQconnect Board	9/15/2020	DSW		± 1/16	DESIGNED BY: DSW DATE: 10/07/2010 SCALE: 1/5.5 DRAWN BY: [blank] CHECKED BY: [blank]
NO REVISION	DATE	BY		± 1"	104364DG SHEET 1 OF 1