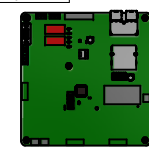
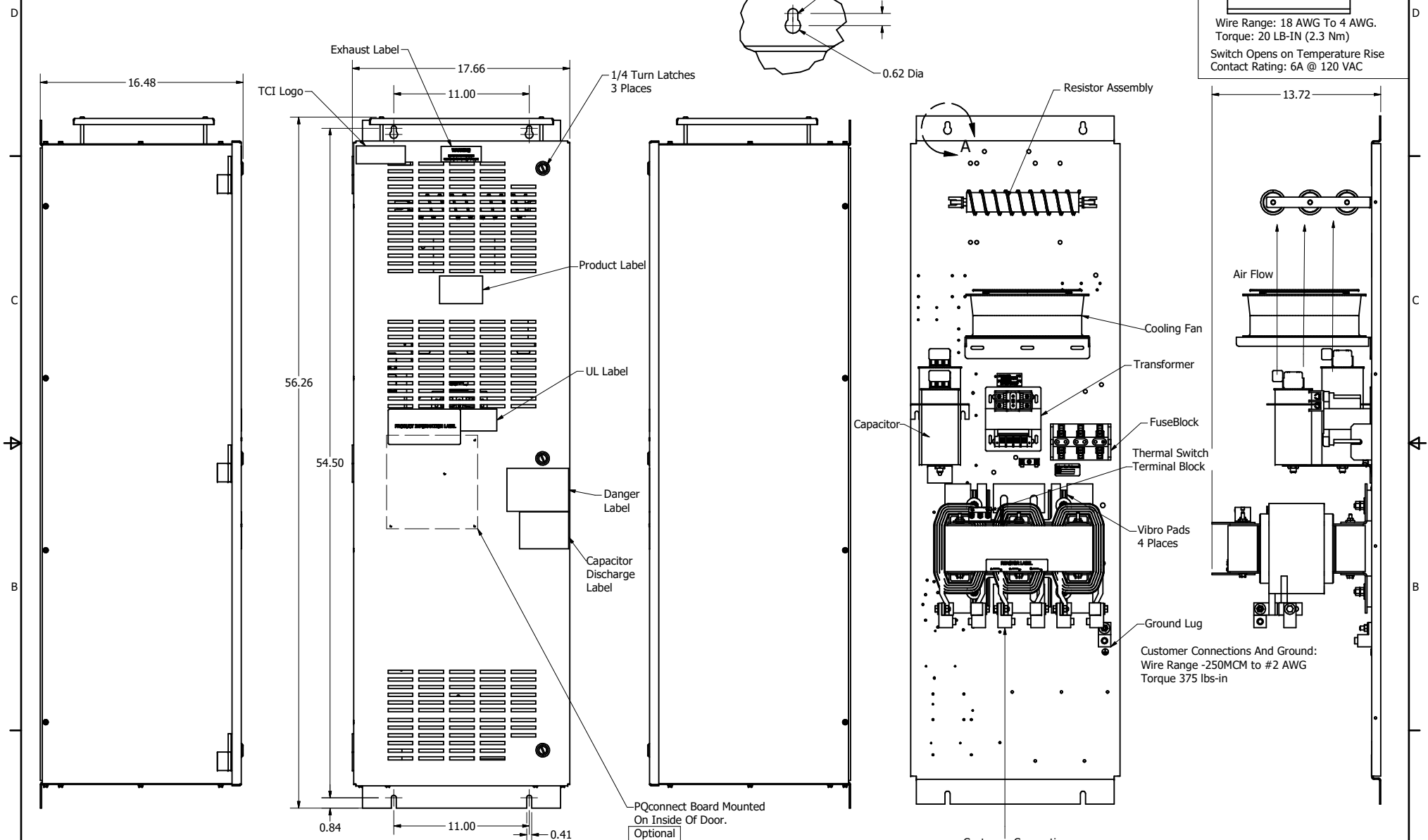
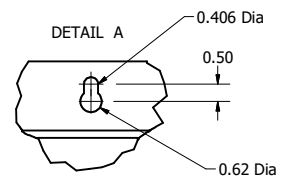
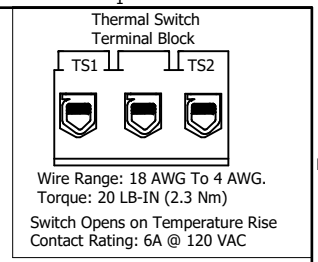


SineWave Part Number	Schematic Drawing#	Approx Weight (LBS)
KMG200A01A	24281-3A	344
KMG200A01P	24281-3P	345

HorsePower (HP)	kVar	Max Amps	Voltage (V)	HZ	Phase
150	13	200	480	60	3



Customer Is Responsible For Installation to Meet All National And Local Electrical Codes.  
Material(s) Shall be RoHS Compliant

TCI, LLC CLAIMS PROPRIETARY RIGHTS IN THE MATERIAL HEREIN DISCLOSED. IT IS SUPPLIED WITHOUT PREJUDICE TO ANY PATENT RIGHTS OF TCI AND MAY NOT BE REPRODUCED OR USED TO MANUFACTURE ANYTHING SHOWN THEREIN WITHOUT WRITTEN PERMISSION FROM TCI.				TOLERANCES (EXCEPT AS NOTED) DECIMAL .XX ±.25 .XXX ±.10 FRACTIONAL ± 1/16 ANGULAR ± 1°		W132 N10611 Grant Drive Germantown, WI 53022 <b>KMG200A01- SineWave Filter</b> Enclosed Type 1, 150HP, 480V DWN BY: DSW DATE: 10/07/2014 104361DG SCALE: 1/5.5 REVISED: DATE: CDR SHEET 1 OF 1	
ID	Add PQconnect Board	9/8/2020	DSW				
NO	REVISION	DATE	BY				