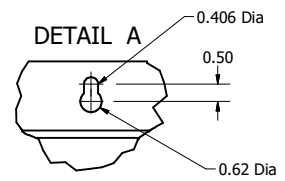


| SineWave Part Number | Schematic Drawing# | Approx Weight (LBS) |
|----------------------|--------------------|---------------------|
| KMG130A01A | 24281-3A | 300 |
| KMG130A01P | 24281-3P | 301 |

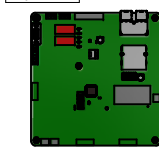
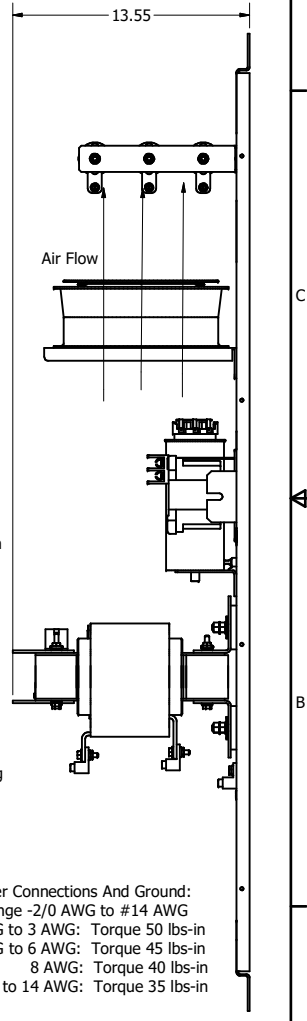
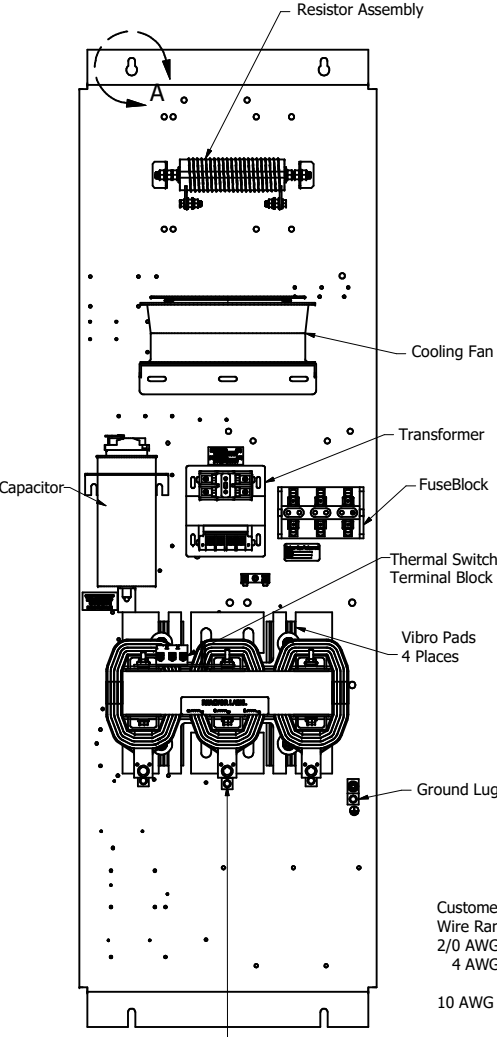
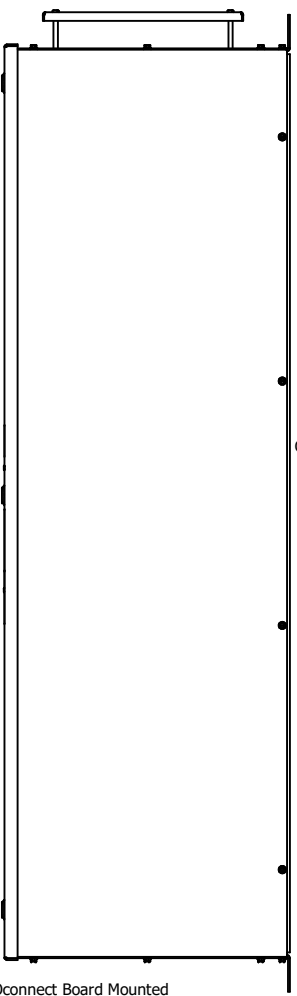
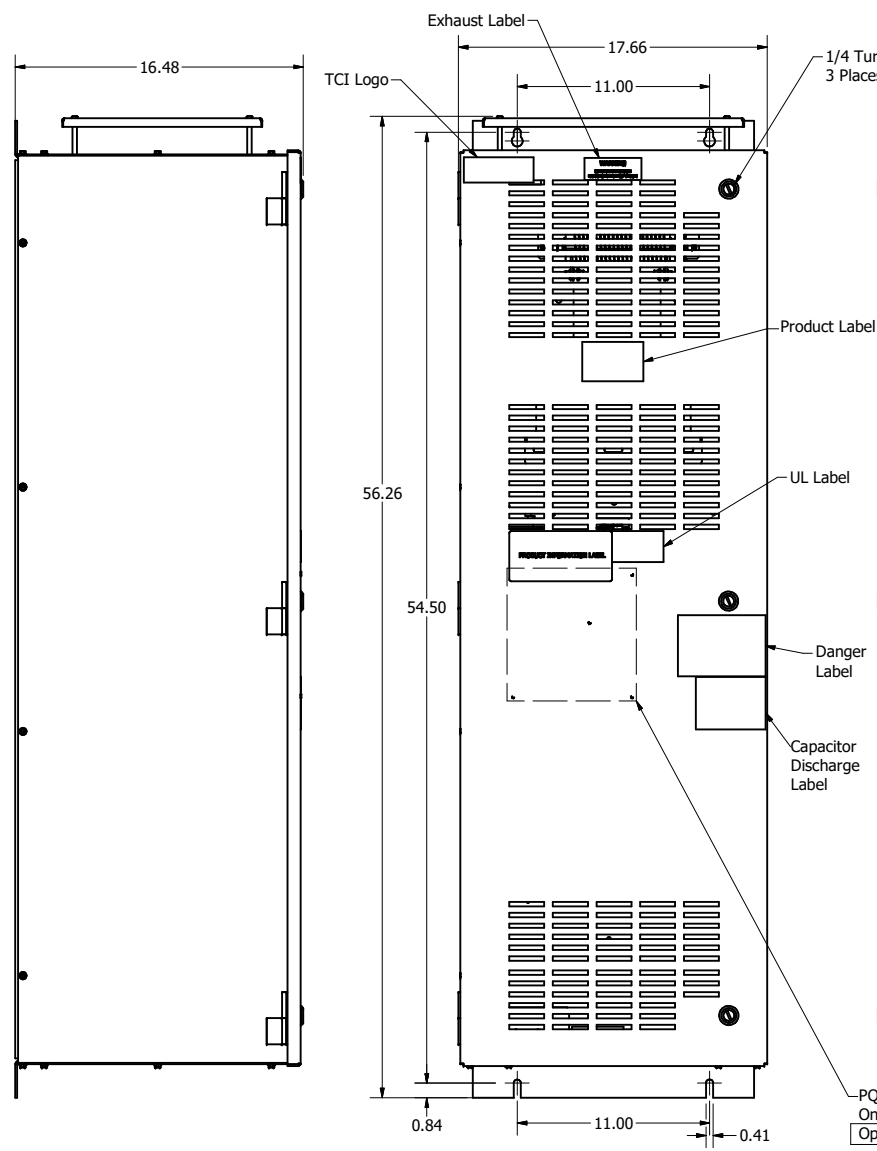
| HorsePower (HP) | kVar | Max Amps | Voltage (V) | HZ | Phase |
|-----------------|------|----------|-------------|----|-------|
| 100 | 10 | 130 | 480 | 60 | 3 |

Thermal Switch Terminal Block

Wire Range: 18 AWG To 4 AWG.
Torque: 20 LB-IN (2.3 Nm)
Switch Opens on Temperature Rise
Contact Rating: 6A @ 120 VAC



D
C
B
A



TCl, LLC CLAIMS PROPRIETARY RIGHTS IN THE MATERIAL HEREIN DISCLOSED. IT IS SUPPLIED WITHOUT PREJUDICE TO ANY PATENT RIGHTS OF TCl AND MAY NOT BE REPRODUCED OR USED TO MANUFACTURE ANYTHING SHOWN THEREIN WITHOUT WRITTEN PERMISSION FROM TCl.

| TOLERANCES (EXCEPT AS NOTED) | |
|------------------------------|-------------------------|
| DECIMAL | .XX ± .25 .XXX ± .10 |
| FRACTIONAL | ± 1/16 |
| ANGULAR | ± 1° |

TCl W132 N10611 Grant Drive
Germantown, WI 53022

KMG130A01-, SineWave Filter
Enclosed Type 1, 100HP, 480V

104359DG

DATE: 10/07/2014
SCALE: 1/5.5

| ID | ADD | DATE | BY | REVISION |
|----|-----|------|----|----------|
| NO | NO | NO | NO | NO |