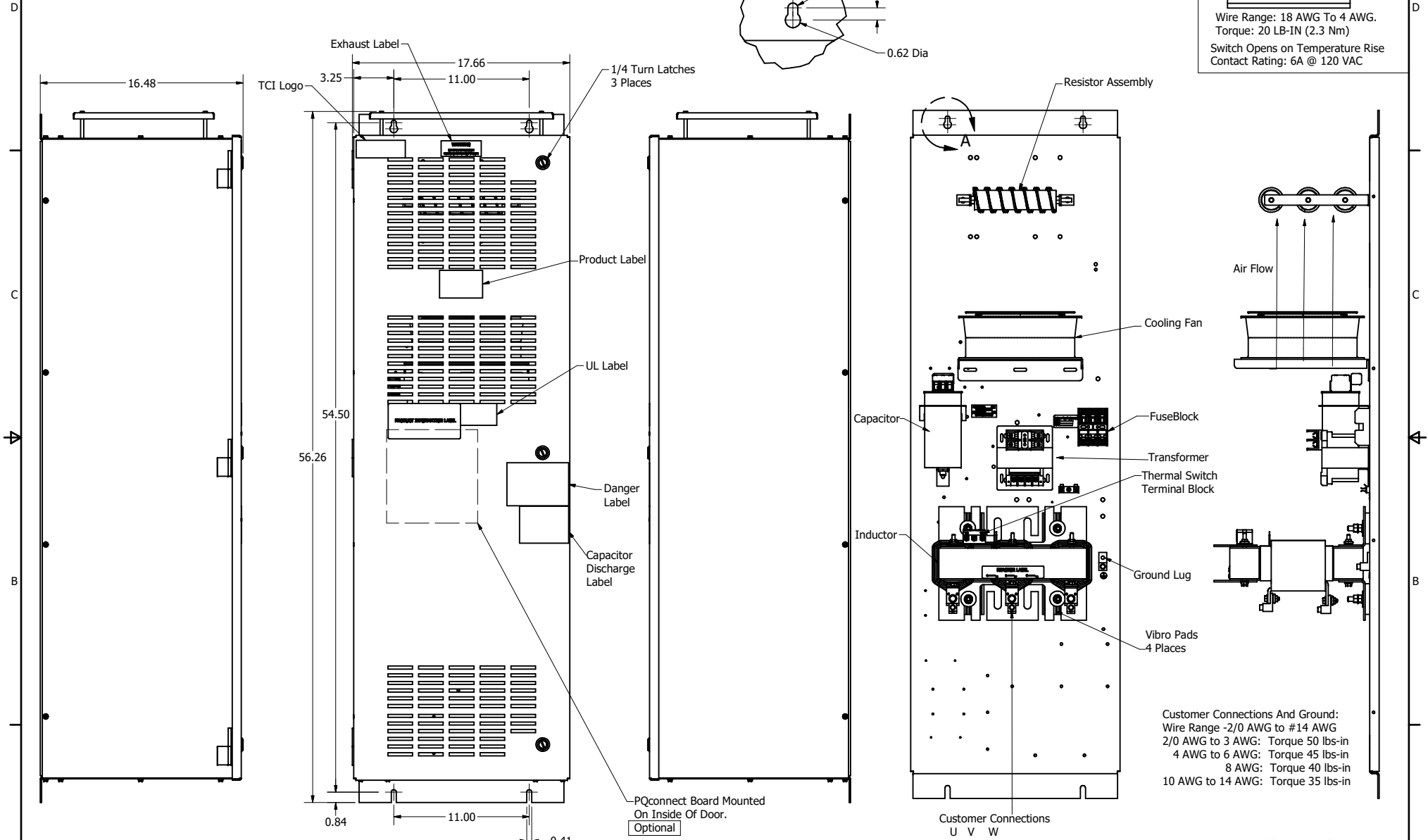
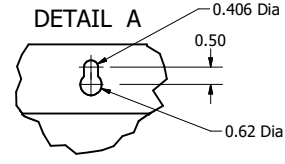


| SineWave Part Number | Schematic Drawing# | Approx Weight (LBS) |
|----------------------|--------------------|---------------------|
| KMG80A01A            | 24281-3A           | 259                 |
| KMG80A01P            | 24281-3P           | 260                 |

| HorsePower (HP) | kVar | Max Amps | Voltage (V) | HZ | Phase |
|-----------------|------|----------|-------------|----|-------|
| 60              | 5    | 80       | 480         | 60 | 3     |

1  
Thermal Switch Terminal Block

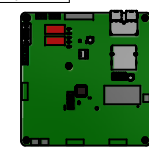
Wire Range: 18 AWG To 4 AWG.  
Torque: 20 LB-IN (2.3 Nm)  
Switch Opens on Temperature Rise  
Contact Rating: 6A @ 120 VAC



Customer Connections And Ground:  
Wire Range -2/0 AWG to #14 AWG  
2/0 AWG to 3 AWG: Torque 50 lbs-in  
4 AWG to 6 AWG: Torque 45 lbs-in  
8 AWG: Torque 40 lbs-in  
10 AWG to 14 AWG: Torque 35 lbs-in

Customer Is Responsible For Installation to Meet All National And Local Electrical Codes.

Material(s) Shall be RoHS Compliant



TCI, LLC CLAIMS PROPRIETARY RIGHTS IN THE MATERIAL HEREIN DISCLOSED. IT IS SUPPLIED WITHOUT PREJUDICE TO ANY PATENT RIGHTS OF TCI AND MAY NOT BE REPRODUCED OR USED TO MANUFACTURE ANYTHING SHOWN THEREIN WITHOUT WRITTEN PERMISSION FROM TCI.

| ID | DESCRIPTION         | DATE      | BY  | REVISION |
|----|---------------------|-----------|-----|----------|
| 1  | Add PQconnect Board | 6/17/2020 | DSW |          |
| NO | REVISION            | DATE      | BY  |          |

| TOLERANCES (EXCEPT AS NOTED) |                         |
|------------------------------|-------------------------|
| DECIMAL                      | .XX ± .25<br>.XXX ± .10 |
| FRACTIONAL                   | ± 1/16                  |
| ANGULAR                      | ± 1°                    |

**TCI** W132 N10611 Grant Drive  
Germantown, WI 53022

KMG80A01-, SineWave Filter  
Enclosed Type 1, 60HP, 480V

DATE: 10/07/2014  
DWG NO: 104357DG  
SCALE: 1/5.5  
SHEET: 1 OF 1