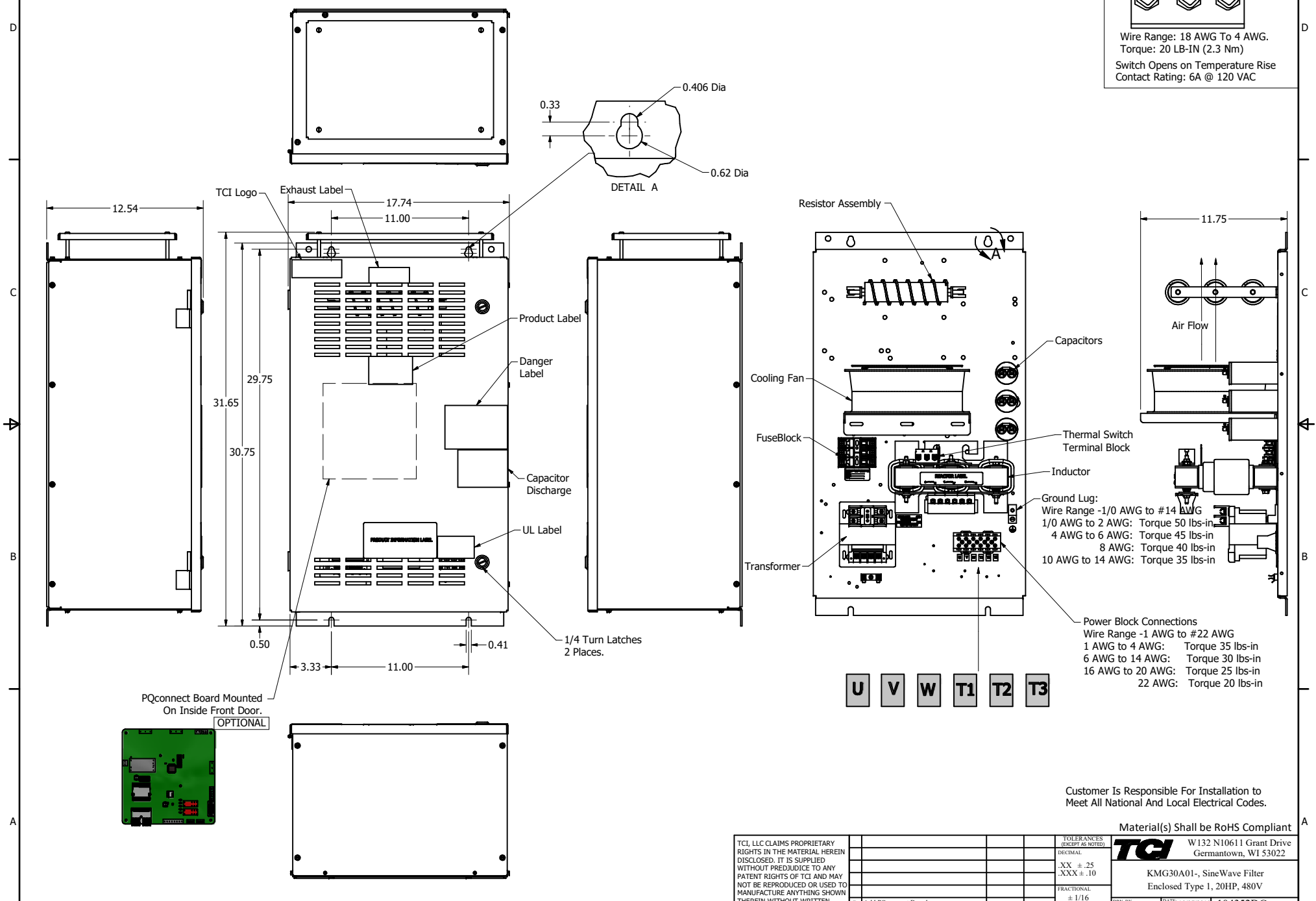
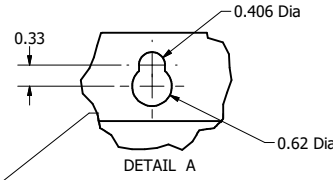


SineWave Part Number	Schematic Drawing#	Approx Weight (LBS)
KMG30A01A	24281-1A	139
KMG30A01P	24281-1P	140

HorsePower (HP)	kVar	Max Amps	Voltage (V)	HZ	Phase
20	3	30	480	60	3

Thermal Switch Terminal Block

Wire Range: 18 AWG To 4 AWG.
Torque: 20 LB-IN (2.3 Nm)
Switch Opens on Temperature Rise
Contact Rating: 6A @ 120 VAC



U V W T1 T2 T3

Customer Is Responsible For Installation to Meet All National And Local Electrical Codes.

Material(s) Shall be RoHS Compliant

TCI, LLC CLAIMS PROPRIETARY RIGHTS IN THE MATERIAL HEREIN DISCLOSED. IT IS SUPPLIED WITHOUT PREJUDICE TO ANY PATENT RIGHTS OF TCI AND MAY NOT BE REPRODUCED OR USED TO MANUFACTURE ANYTHING SHOWN THEREIN WITHOUT WRITTEN PERMISSION FROM TCI.					TOLERANCES (EXCEPT AS NOTED)	W132 N10611 Grant Drive Germantown, WI 53022 KMG30A01-1 , SineWave Filter Enclosed Type 1, 20HP, 480V 104352DG
					DECIMAL	
					.XX ± .25 .XXX ± .10	
					FRACTIONAL	
B	Add PQconnect Board	6/17/2020	DSW		± 1/16	DRN BY DSW DATE 10/07/2016
NO	REVISION	DATE	BY		± 1°	SCALE: 1/8 DRAWN BY DATE FILE SHEET 1 OF 1