

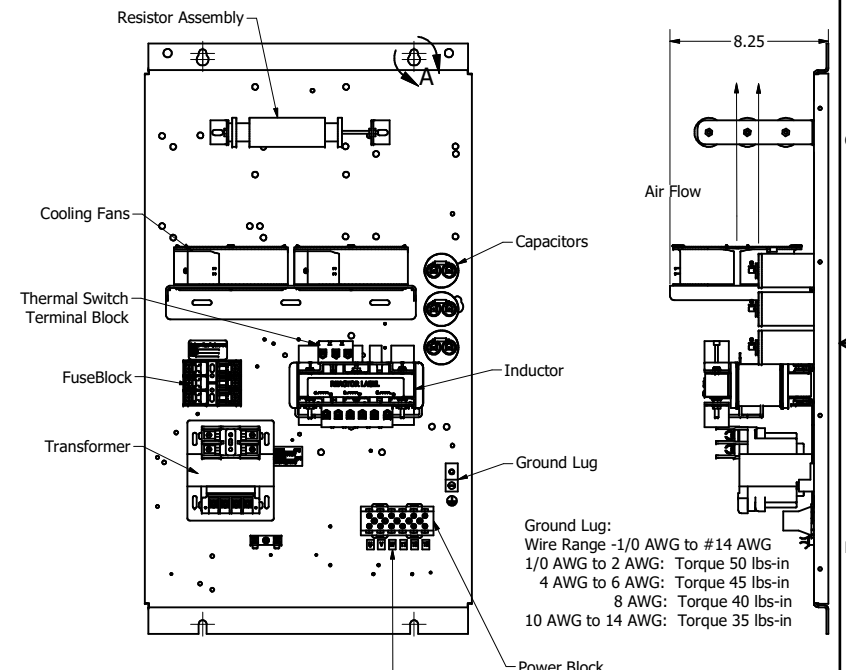
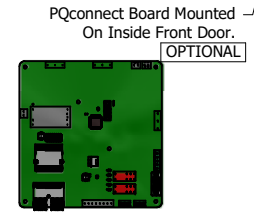
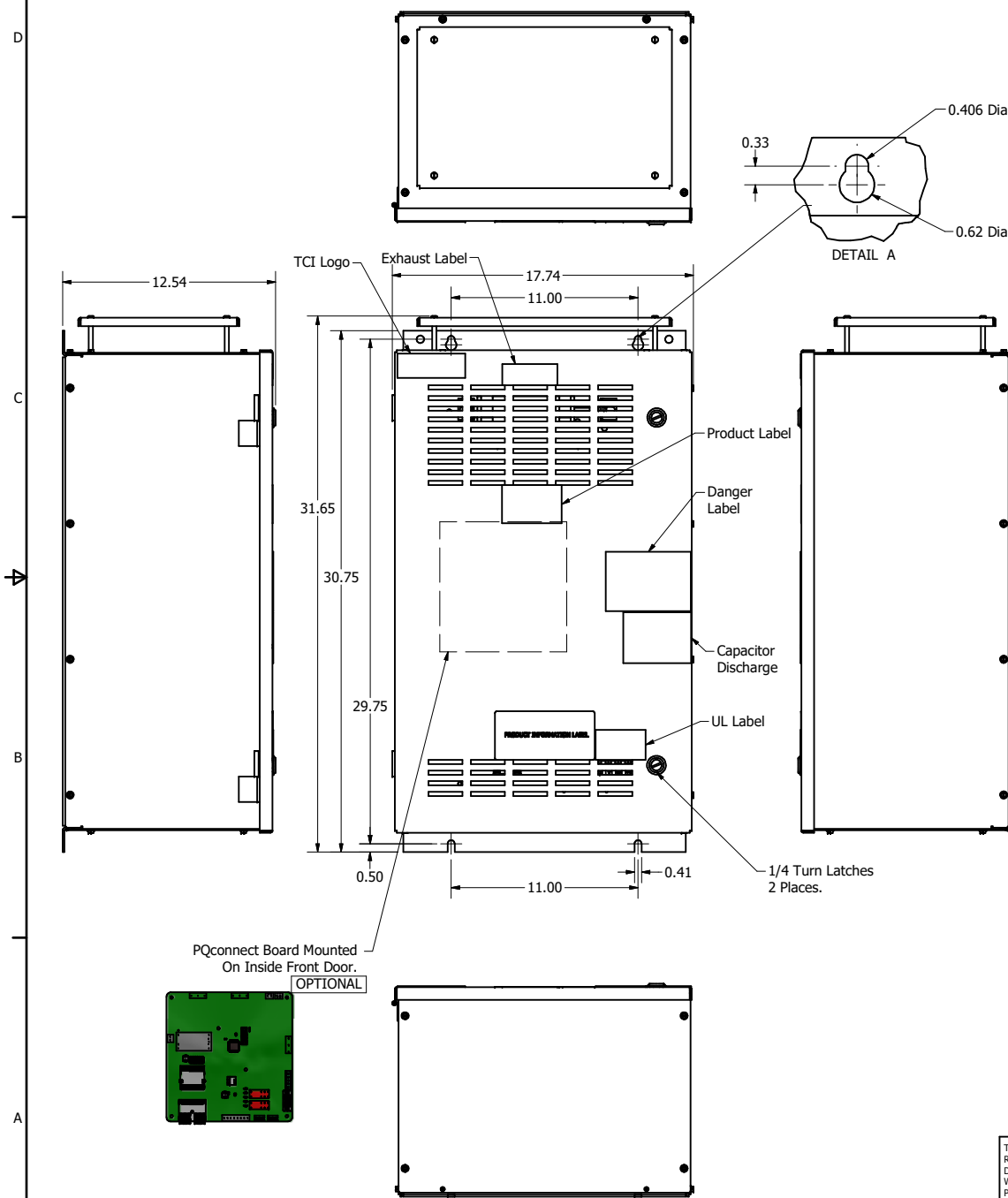
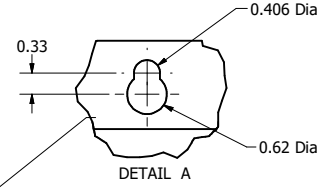
SineWave Part Number	Schematic Drawing#	Approx Weight (LBS)
KMG8A01A	24281-1A	109
KMG8A01P	24281-1P	110

HorsePower (HP)	kVar	Max Amps	Voltage (V)	HZ	Phase
5	0.7	8	480	60	3

1

Thermal Switch Terminal Block

Wire Range: 18 AWG To 4 AWG.
Torque: 20 LB-IN (2.3 Nm)
Switch Opens on Temperature Rise
Contact Rating: 6A @ 120 VAC



Ground Lug:
Wire Range -1/0 AWG to #14 AWG
1/0 AWG to 2 AWG: Torque 50 lbs-in
4 AWG to 6 AWG: Torque 45 lbs-in
8 AWG: Torque 40 lbs-in
10 AWG to 14 AWG: Torque 35 lbs-in

U V W T1 T2 T3

Power Block Connections
Wire Range -1 AWG to #22 AWG
1 AWG to 4 AWG: Torque 35 lbs-in
6 AWG to 14 AWG: Torque 30 lbs-in
16 AWG to 20 AWG: Torque 25 lbs-in
22 AWG: Torque 20 lbs-in

Customer Is Responsible For Installation to Meet All National And Local Electrical Codes.

Material(s) Shall be RoHS Compliant

TCI, LLC CLAIMS PROPRIETARY RIGHTS IN THE MATERIAL HEREIN DISCLOSED. IT IS SUPPLIED WITHOUT PREJUDICE TO ANY PATENT RIGHTS OF TCI AND MAY NOT BE REPRODUCED OR USED TO MANUFACTURE ANYTHING SHOWN THEREIN WITHOUT WRITTEN PERMISSION FROM TCI.					TOLERANCES (EXCEPT AS NOTED)	W132 N10611 Grant Drive Germantown, WI 53022 KMG8A01-, SineWave Filter Enclosed Type 1, 5HP, 480V
					DECIMAL .XX ±.25 .XXX ±.10	
					FRACTIONAL ± 1/16	
					ANGULAR ± 1°	
C	Add PQconnect Board	6/17/2020	DSW		DRN BY DSW DATE 10/07/2014 104348DG	
NO	REVISION	DATE	BY		SCALE: 1/8 DRAWING: SHEET 1 OF 1	