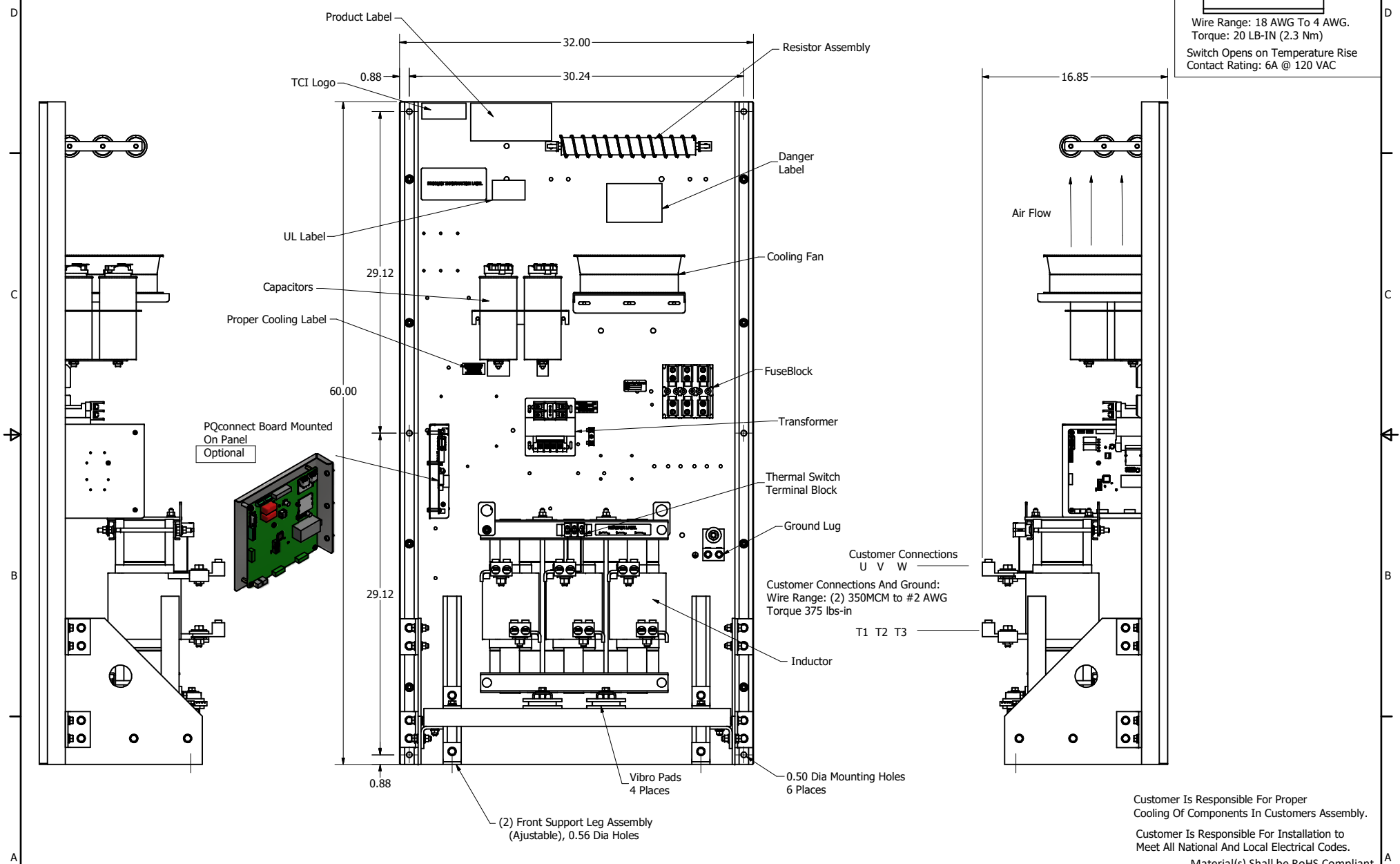
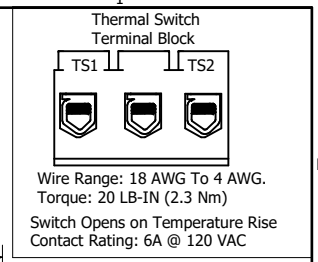


SineWave Part Number	Schematic Drawing#	Approx Weight (LBS)
KMG362A00A	24281-3A	475
KMG362A00P	24281-3P	480

HorsePower (HP)	kVar	Max Amps	Voltage (V)	HZ	Phase
300	30	362	480	60	3



Customer Is Responsible For Proper Cooling Of Components In Customers Assembly.

Customer Is Responsible For Installation to Meet All National And Local Electrical Codes.

Material(s) Shall be RoHS Compliant

TCI, LLC CLAIMS PROPRIETARY RIGHTS IN THE MATERIAL HEREIN DISCLOSED. IT IS SUPPLIED WITHOUT PREJUDICE TO ANY PATENT RIGHTS OF TCI AND MAY NOT BE REPRODUCED OR USED TO MANUFACTURE ANYTHING SHOWN THEREIN WITHOUT WRITTEN PERMISSION FROM TCI.				TOLERANCES (EXCEPT AS NOTED)		W132 N10611 Grant Drive Germantown, WI 53022 KMG362A00, SineWave Filter Open Panel, 300HP, 480V	
				DECIMAL			
				.XX ± .25 .XXX ± .10			
				FRACTIONAL			
± 1/16		DRN BY: DSW DATE: 10/07/2014 SCALE: 1/5 FILE:	104342DG DATE: 10/07/2014 FILE:				
ANGULAR		± 1°					
NO		REVISION		DATE		BY	