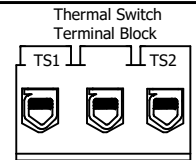
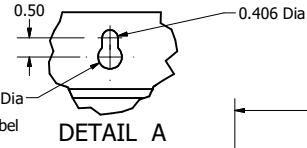
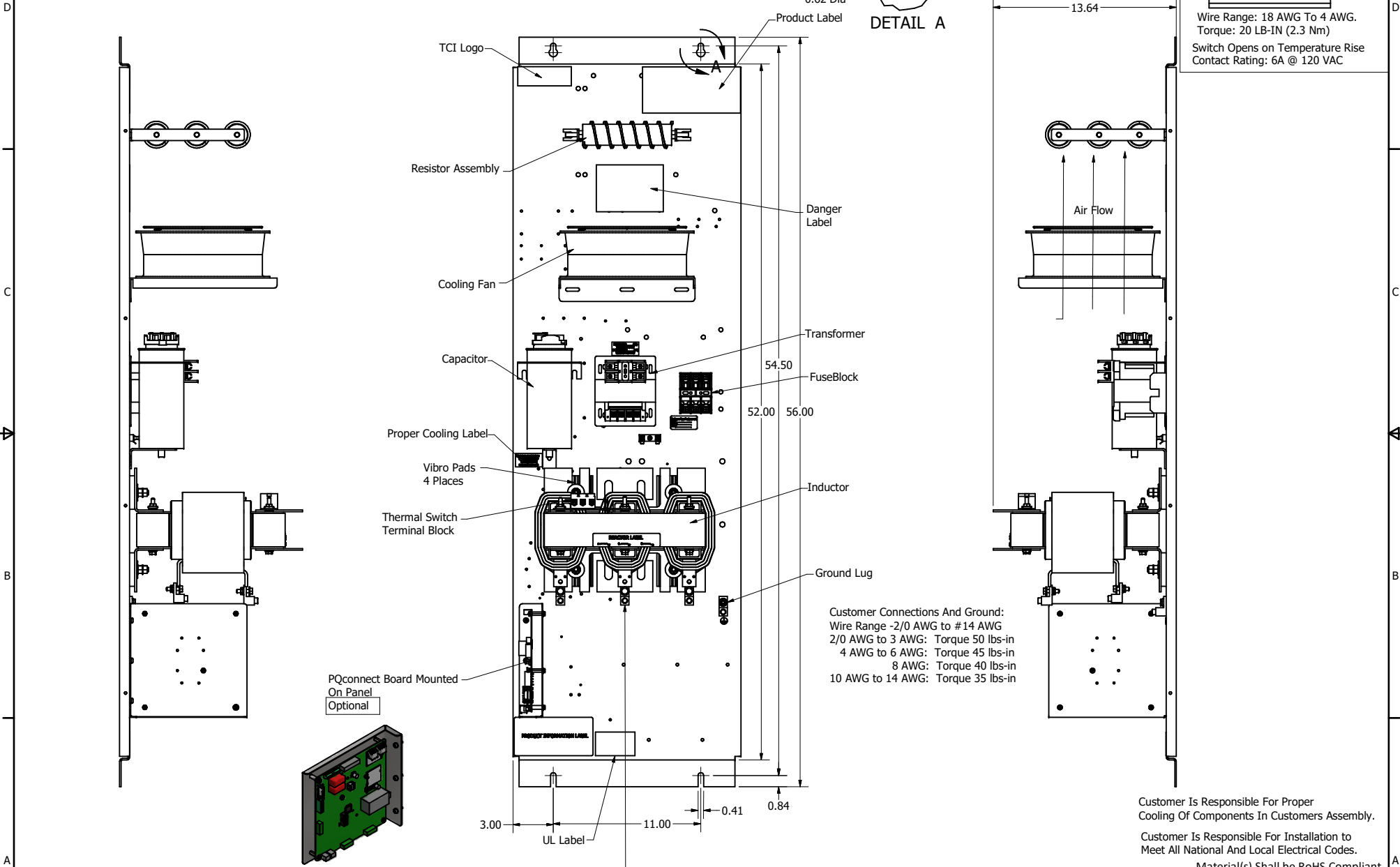


| SineWave Part Number | Schematic Drawing# | Approx Weight (LBS) |
|----------------------|--------------------|---------------------|
| KMG110A00A | 24281-3A | 195 |
| KMG110A00P | 24281-3P | 200 |

| HorsePower (HP) | kVar | Max Amps | Voltage (V) | HZ | Phase |
|-----------------|------|----------|-------------|----|-------|
| 75 | 10 | 110 | 480 | 60 | 3 |



Wire Range: 18 AWG To 4 AWG.
Torque: 20 LB-IN (2.3 Nm)
Switch Opens on Temperature Rise
Contact Rating: 6A @ 120 VAC



Customer Connections And Ground:
Wire Range -2/0 AWG to #14 AWG
2/0 AWG to 3 AWG: Torque 50 lbs-in
4 AWG to 6 AWG: Torque 45 lbs-in
8 AWG: Torque 40 lbs-in
10 AWG to 14 AWG: Torque 35 lbs-in

Customer Is Responsible For Proper Cooling Of Components In Customers Assembly.

Customer Is Responsible For Installation to Meet All National And Local Electrical Codes.

Material(s) Shall be RoHS Compliant

Customer Connections
U V W
T1 T2 T3

TCl, LLC CLAIMS PROPRIETARY RIGHTS IN THE MATERIAL HEREIN DISCLOSED. IT IS SUPPLIED WITHOUT PREJUDICE TO ANY PATENT RIGHTS OF TCl AND MAY NOT BE REPRODUCED OR USED TO MANUFACTURE ANYTHING SHOWN THEREIN WITHOUT WRITTEN PERMISSION FROM TCl.

| REV | DESCRIPTION | DATE | BY | SCALE |
|-----|---------------------|-----------|-----|-------|
| B | Add PQconnect Board | 6/17/2020 | DSW | |
| NO | REVISION | DATE | BY | SCALE |

| | | | |
|------------------------------|-------------------------|---|------------------|
| TOLERANCES (EXCEPT AS NOTED) | | TCl W132 N10611 Grant Drive Germantown, WI 53022 | |
| DECIMAL | .XX ± .25 .XXX ± .10 | KMG110A00-, SineWave Filter Open Panel, 75HP, 480V | |
| FRACTIONAL | ± 1/16 | | |
| ANGULAR | ± 1° | DRN BY: DSW | DATE: 10/04/2016 |
| | | SCALE: 1/5 | FILE: 104336DG |
| | | REVISED BY: CSE | SHT 1 OF 1 |