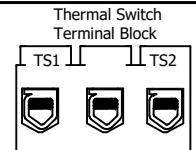
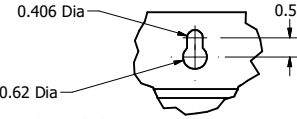
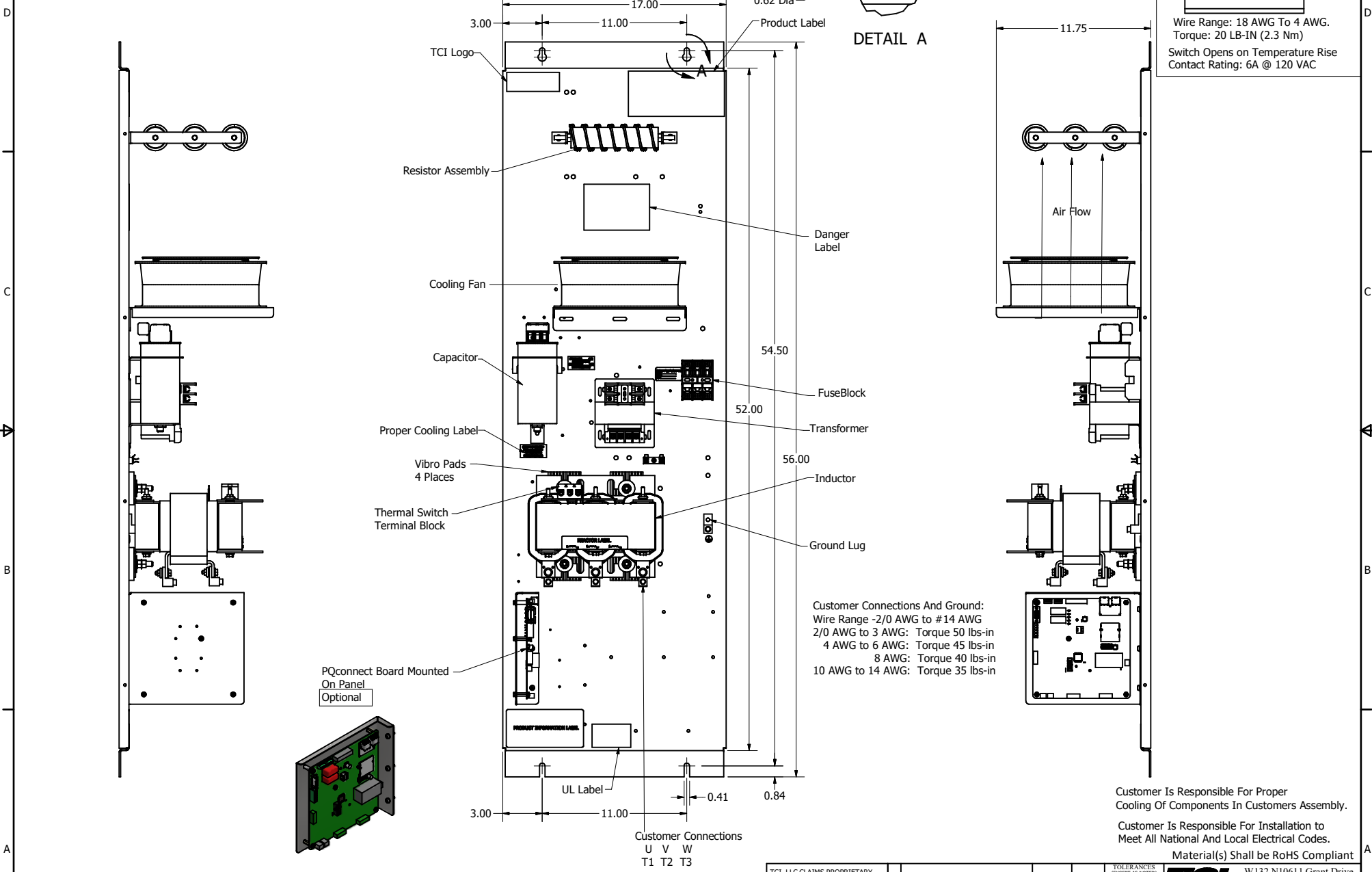


SineWave Part Number	Schematic Drawing#	Approx Weight (LBS)
KMG65A00A	24281-3A	159
KMG65A00P	24281-3P	164

HorsePower (HP)	kVar	Max Amps	Voltage (V)	HZ	Phase
50	5	65	480	60	3



Wire Range: 18 AWG To 4 AWG.  
Torque: 20 LB-IN (2.3 Nm)  
Switch Opens on Temperature Rise  
Contact Rating: 6A @ 120 VAC



Customer Connections And Ground:  
Wire Range -2/0 AWG to #14 AWG  
2/0 AWG to 3 AWG: Torque 50 lbs-in  
4 AWG to 6 AWG: Torque 45 lbs-in  
8 AWG: Torque 40 lbs-in  
10 AWG to 14 AWG: Torque 35 lbs-in

Customer Is Responsible For Proper Cooling Of Components In Customers Assembly.

Customer Is Responsible For Installation to Meet All National And Local Electrical Codes.

Material(s) Shall be RoHS Compliant

TCI, LLC CLAIMS PROPRIETARY RIGHTS IN THE MATERIAL HEREIN DISCLOSED. IT IS SUPPLIED WITHOUT PREJUDICE TO ANY PATENT RIGHTS OF TCI AND MAY NOT BE REPRODUCED OR USED TO MANUFACTURE ANYTHING SHOWN THEREIN WITHOUT WRITTEN PERMISSION FROM TCI.					TOLERANCES (EXCEPT AS NOTED) DECIMAL .XX ± .25 .XXX ± .10	<b>TCI</b> W132 N10611 Grant Drive Germantown, WI 53022  KMG65A00-, SineWave Filter Open Panel, 50HP, 480V	
					FRACTIONAL ± 1/16		
	B	Add PQconnect Board	6/17/2020	DSW	ANGULAR ± 1°		DRN BY: DSW DATE: 10/04/2016 SCALE: 1/5 FILE: 104334DG CDR
	NO	REVISION	DATE	BY			SHEET 1 OF 1