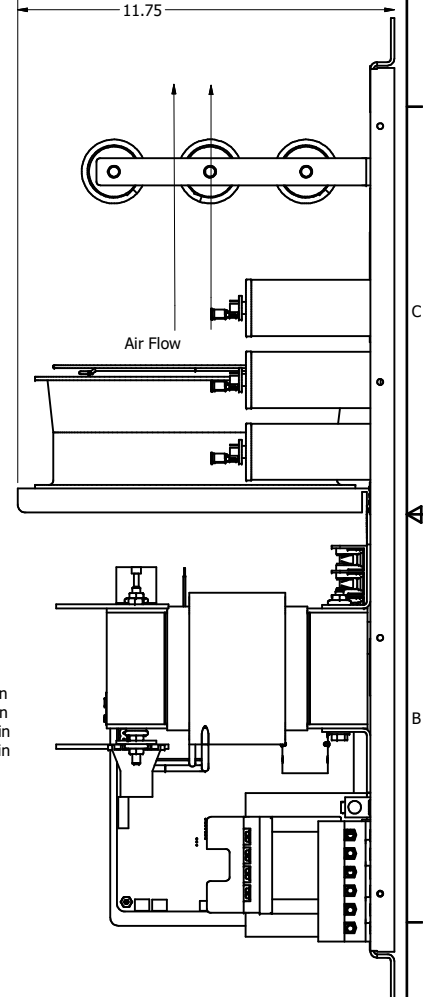
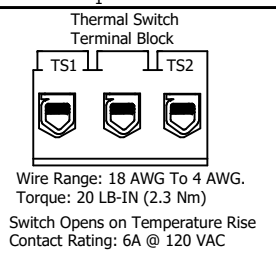
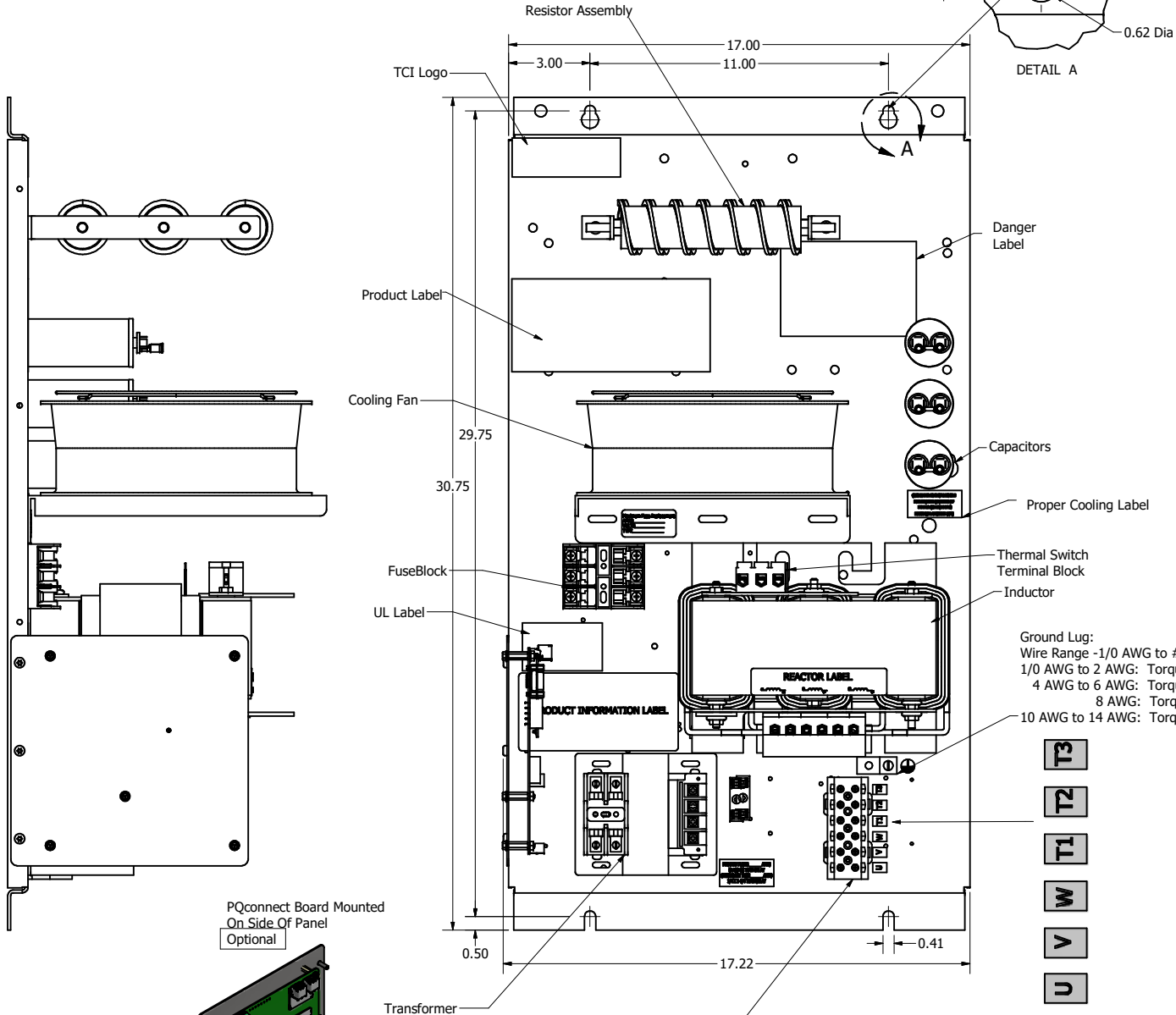


SineWave Part Number	Schematic Drawing#	Approx Weight (LBS)
KMG55A00A	24281-1A	114
KMG55A00P	24281-1P	115

HorsePower (HP)	kVar	Max Amps	Voltage (V)	HZ	Phase
40	3	55	480	60	3

D  
C  
B  
A



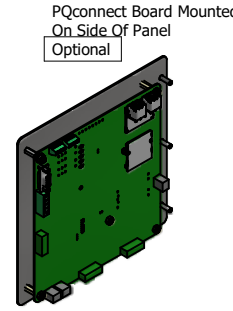
Ground Lug:  
 Wire Range -1/0 AWG to #14 AWG  
 1/0 AWG to 2 AWG: Torque 50 lbs-in  
 4 AWG to 6 AWG: Torque 45 lbs-in  
 8 AWG: Torque 40 lbs-in  
 10 AWG to 14 AWG: Torque 35 lbs-in

- T3
- T2
- T1
- W
- V
- U

Power Block Connections  
 Wire Range -1 AWG to #22 AWG  
 1 AWG to 4 AWG: Torque 35 lbs-in  
 6 AWG to 14 AWG: Torque 30 lbs-in  
 16 AWG to 20 AWG: Torque 25 lbs-in  
 22 AWG: Torque 20 lbs-in

Customer Is Responsible For Proper Cooling Of Components In Customers Assembly.  
 Customer Is Responsible For Installation to Meet All National And Local Electrical Codes.

Material(s) Shall be RoHS Compliant



TCI, LLC CLAIMS PROPRIETARY RIGHTS IN THE MATERIAL HEREIN DISCLOSED. IT IS SUPPLIED WITHOUT PREJUDICE TO ANY PATENT RIGHTS OF TCI AND MAY NOT BE REPRODUCED OR USED TO MANUFACTURE ANYTHING SHOWN THEREIN WITHOUT WRITTEN PERMISSION FROM TCI.

TOLERANCES (EXCEPT AS NOTED)			
DECIMAL			
.XX	± .25		
.XXX	± .10		
FRACTIONAL			
± 1/16			
ANGULAR			
± 1°			

W132 N10611 Grant Drive Germantown, WI 53022	
KMG55A00- SineWave Filter Open Panel, 40HP, 480V	
DRN BY: DSW	DATE: 10/04/2016
SCALE: 1/8	REVISED: 10/04/2016
NO	REVISION
DATE	BY
104333DG	1
1	SHT 1 OF 1

4 3 2 1