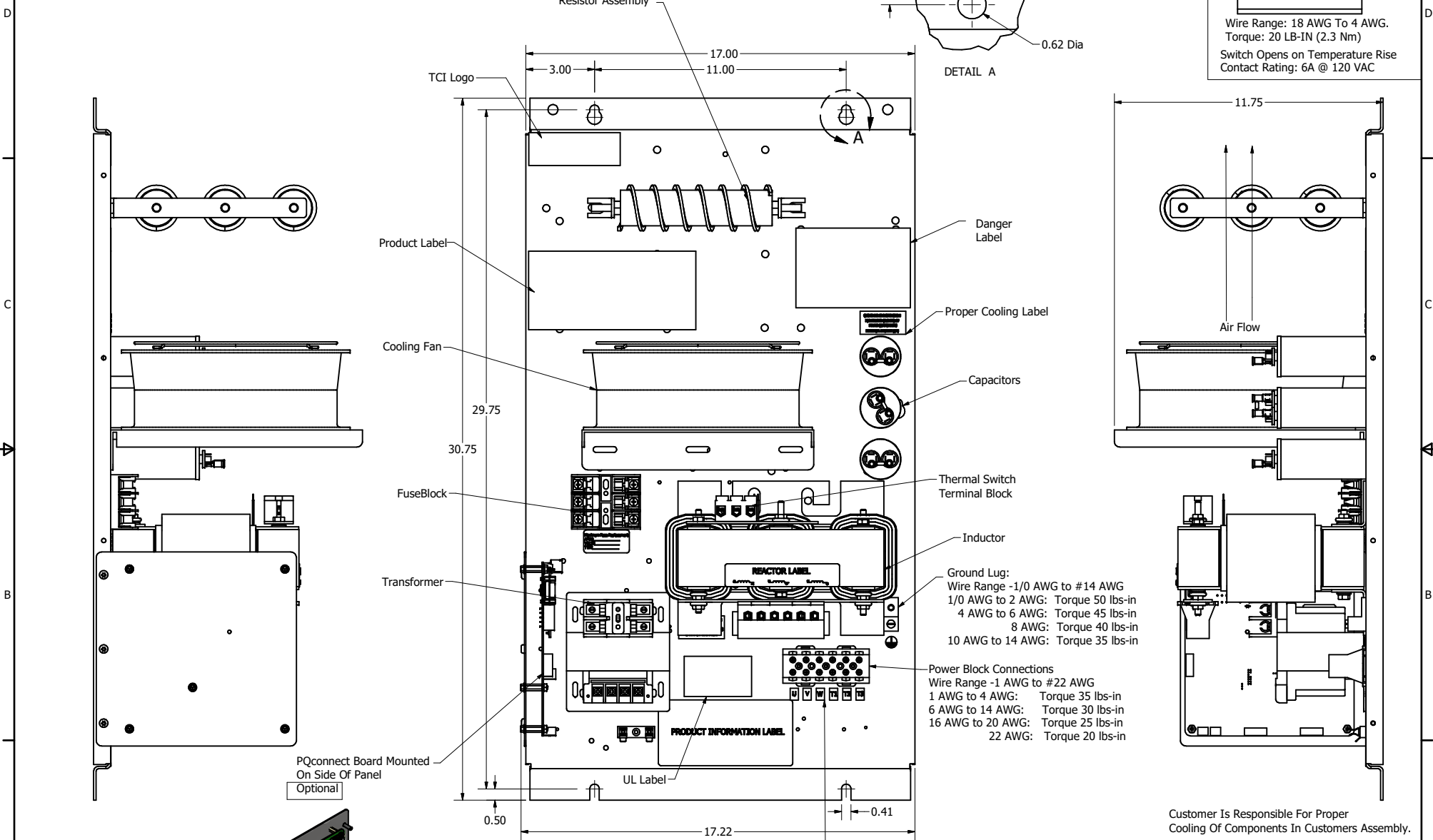
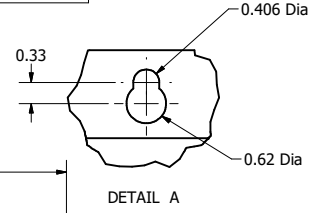
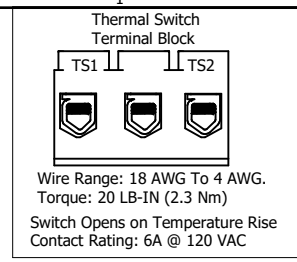
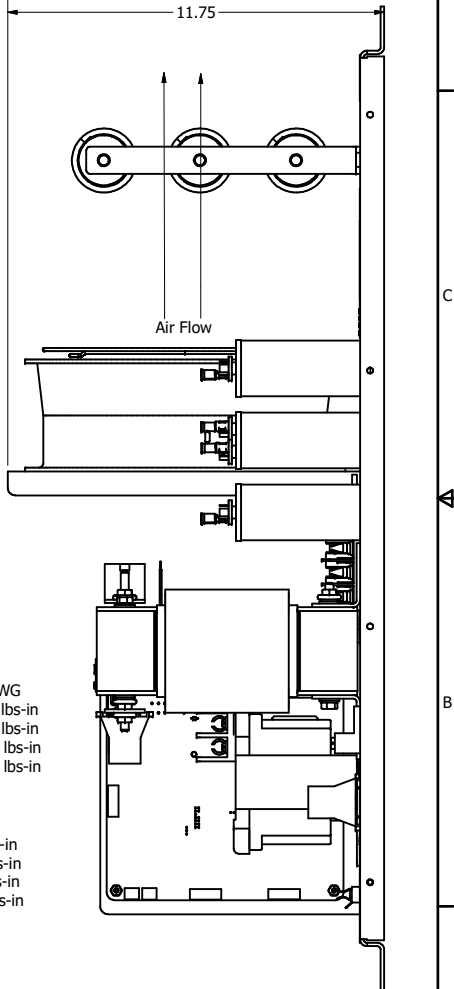
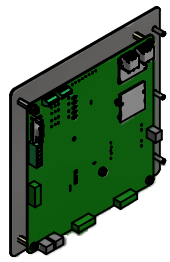


SineWave Part Number	Schematic Drawing#	Approx Weight (LBS)
KMG45A00A	24281-1A	99
KMG45A00P	24281-1P	100

HorsePower (HP)	kVar	Max Amps	Voltage (V)	HZ	Phase
30	3.5	45	480	60	3



PQconnect Board Mounted On Side Of Panel  
Optional



- Ground Lug:**  
 Wire Range -1/0 AWG to #14 AWG  
 1/0 AWG to 2 AWG: Torque 50 lbs-in  
 4 AWG to 6 AWG: Torque 45 lbs-in  
 8 AWG: Torque 40 lbs-in  
 10 AWG to 14 AWG: Torque 35 lbs-in
- Power Block Connections**  
 Wire Range -1 AWG to #22 AWG  
 1 AWG to 4 AWG: Torque 35 lbs-in  
 6 AWG to 14 AWG: Torque 30 lbs-in  
 16 AWG to 20 AWG: Torque 25 lbs-in  
 22 AWG: Torque 20 lbs-in

Customer Is Responsible For Proper Cooling Of Components In Customers Assembly.  
 Customer Is Responsible For Installation to Meet All National And Local Electrical Codes.

U V W T1 T2 T3

Material(s) Shall be RoHS Compliant

TCI, LLC CLAIMS PROPRIETARY RIGHTS IN THE MATERIAL HEREIN DISCLOSED. IT IS SUPPLIED WITHOUT PREJUDICE TO ANY PATENT RIGHTS OF TCI AND MAY NOT BE REPRODUCED OR USED TO MANUFACTURE ANYTHING SHOWN THEREIN WITHOUT WRITTEN PERMISSION FROM TCI.				TOLERANCES (EXCEPT AS NOTED)		W132 N10611 Grant Drive Germantown, WI 53022 <b>KMG45A000- SineWave Filter</b> Open Panel, 30HP, 480V		
				DECIMAL	.XX ±.25			
					.XXX ±.10			
				FRACTIONAL	± 1/16			
B	Add PQconnect Board	6/17/2020	DSW	ANGULAR	± 1°	OWN BY DSW	DATE 10/04/2014	
NO	REVISION	DATE	BY	SCALE: 1/8	DRAWN BY	DATE 10/04/2014	104332DG	
							FILE	SHT 1 OF 1