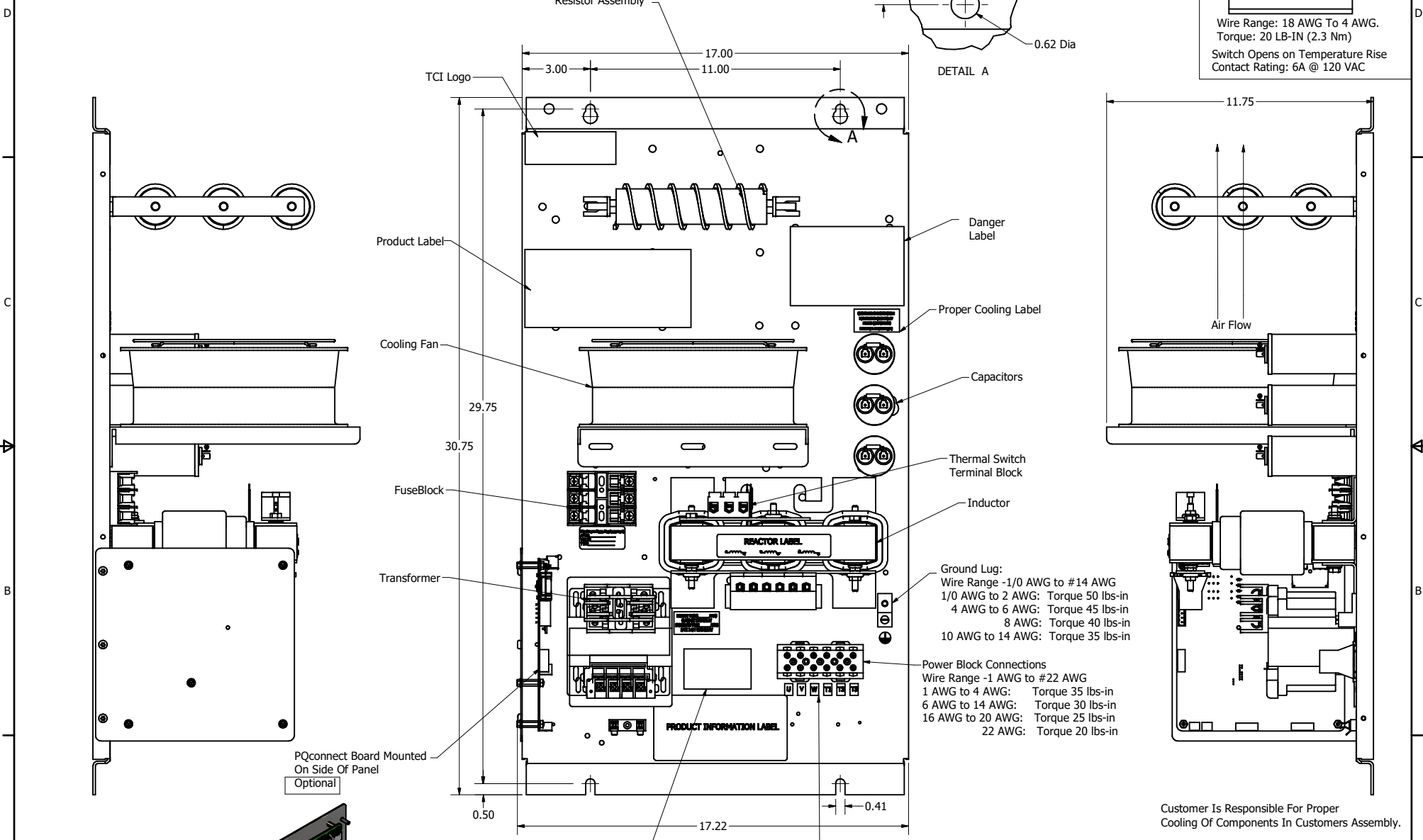
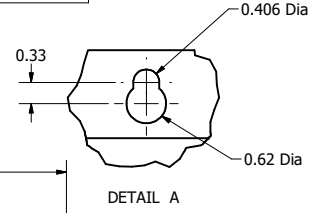


SineWave Part Number	Schematic Drawing#	Approx Weight (LBS)
KMG30A00A	24281-1A	84
KMG30A00P	24281-1P	85

HorsePower (HP)	kVar	Max Amps	Voltage (V)	HZ	Phase
20	3	30	480	60	3

Thermal Switch Terminal Block

Wire Range: 18 AWG To 4 AWG.
Torque: 20 LB-IN (2.3 Nm)
Switch Opens on Temperature Rise
Contact Rating: 6A @ 120 VAC



Customer Is Responsible For Proper Cooling Of Components In Customers Assembly.
Customer Is Responsible For Installation to Meet All National And Local Electrical Codes.

Material(s) Shall be RoHS Compliant

TCI, LLC CLAIMS PROPRIETARY RIGHTS IN THE MATERIAL HEREIN DISCLOSED. IT IS SUPPLIED WITHOUT PREJUDICE TO ANY PATENT RIGHTS OF TCI AND MAY NOT BE REPRODUCED OR USED TO MANUFACTURE ANYTHING SHOWN THEREIN WITHOUT WRITTEN PERMISSION FROM TCI.				TOLERANCES (EXCEPT AS NOTED)		W132 N10611 Grant Drive Germantown, WI 53022 KMG30A00-, SineWave Filter Open Panel, 20HP, 480V
				DECIMAL		
B Add PQconnect Board		6/17/2020	DSW	FRACTIONAL		DWN BY: DSW DATE: 10/04/2016 SCALE: 1/8 SIZE: 104330DG REVISION DATE BY ± 1°
NO		REVISION	DATE	ANGULAR		

