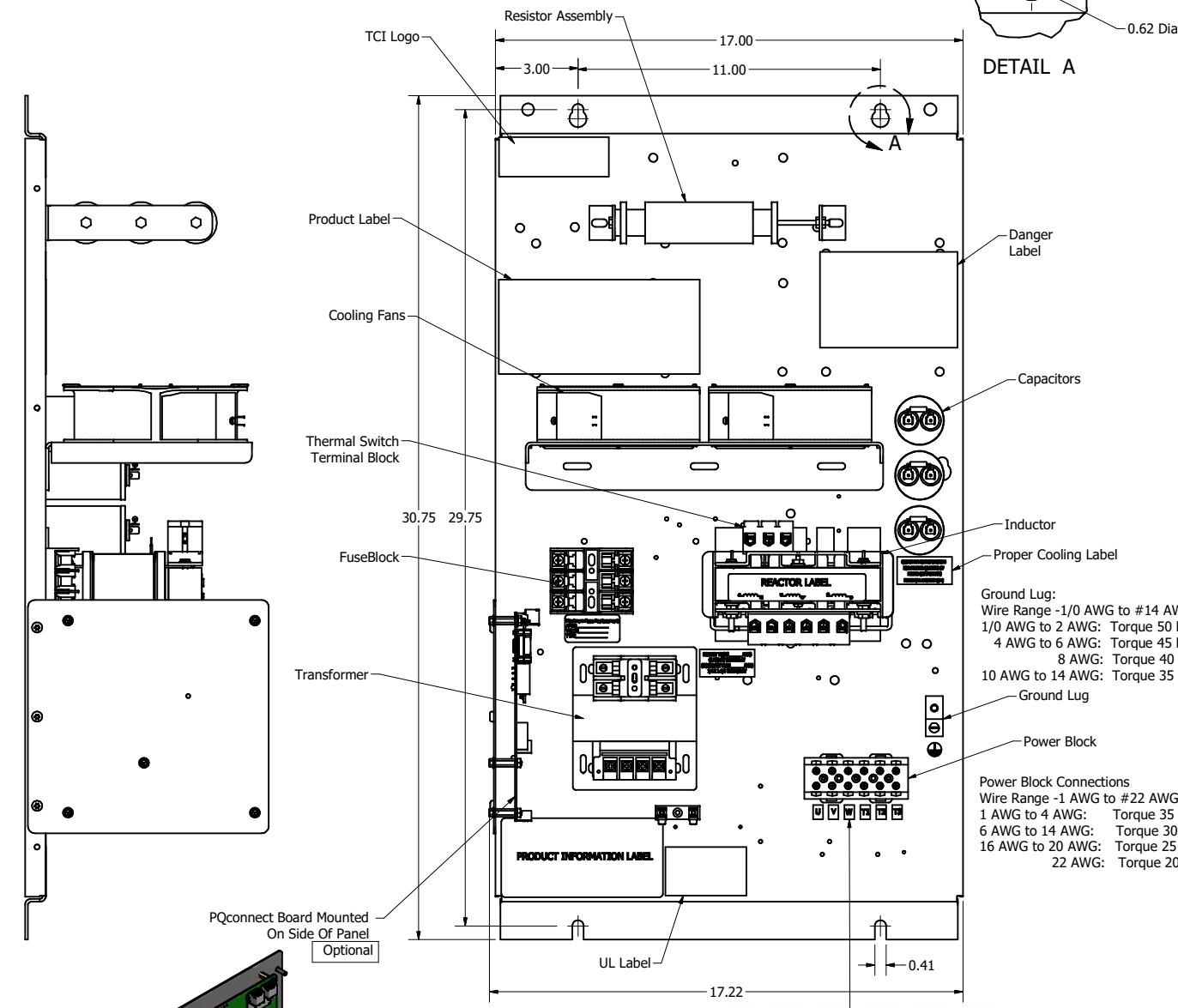


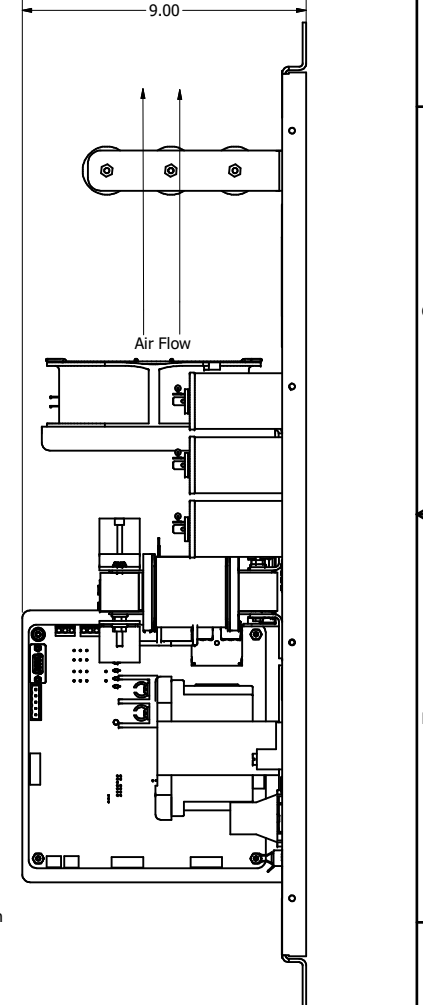
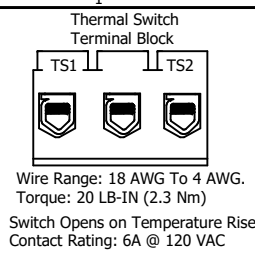
SineWave Part Number	Schematic Drawing#	Approx Weight (LBS)
KMG8A00A	24281-1A	59
KMG8A00P	24281-1P	60

HorsePower (HP)	kVar	Max Amps	Voltage (V)	HZ	Phase
5	0.7	8	480	60	3

D
C
B
A



DETAIL A

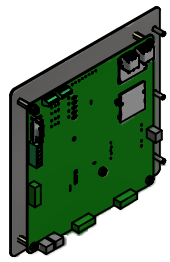


Ground Lug:
 Wire Range -1/0 AWG to #14 AWG
 1/0 AWG to 2 AWG: Torque 50 lbs-in
 4 AWG to 6 AWG: Torque 45 lbs-in
 8 AWG: Torque 40 lbs-in
 10 AWG to 14 AWG: Torque 35 lbs-in

Power Block Connections
 Wire Range -1 AWG to #22 AWG
 1 AWG to 4 AWG: Torque 35 lbs-in
 6 AWG to 14 AWG: Torque 30 lbs-in
 16 AWG to 20 AWG: Torque 25 lbs-in
 22 AWG: Torque 20 lbs-in

Customer Is Responsible For Proper Cooling Of Components In Customers Assembly.
 Customer Is Responsible For Installation to Meet All National And Local Electrical Codes.

Material(s) Shall be RoHS Compliant



U V W T1 T2 T3

TCI, LLC CLAIMS PROPRIETARY RIGHTS IN THE MATERIAL HEREIN DISCLOSED. IT IS SUPPLIED WITHOUT PREDJUDICE TO ANY PATENT RIGHTS OF TCI AND MAY NOT BE REPRODUCED OR USED TO MANUFACTURE ANYTHING SHOWN THEREIN WITHOUT WRITTEN PERMISSION FROM TCI.

TOLERANCES (EXCEPT AS NOTED)			
			DECIMAL
			.XX ± .25
			.XXX ± .10
			FRACTIONAL
			± 1/16
C	Add PQconnect Board	6/17/2020	DSW
NO	REVISION	DATE	BY
			± 1°

W132 N10611 Grant Drive
 Germantown, WI 53022

TCI KMG8A00-, SineWave Filter
 Open Panel, 5HP, 480V

DRN BY: DSW DATE: 10/04/2014 104326DG
 SCALE: 1/8

SHT 1 OF 1